



*Bred
in the
Purple*



Irelands Angus

Female On Property Sale

Tuesday 15 October 2013

**PEDIGREE
PREDICTABILITY
PERFORMANCE**

IRELANDS HALL OF FAME

BULLS OUR FEMALES HAVE BRED



IRELANDS GALAXY G43 \$117,500 AUSTRALIAN RECORD



IRELANDS GAPSTED G25 \$56,000



IRELANDS HIERARCHY H152 \$20,000



IRELANDS FLETCHER F1 \$43,000



IRELANDS ERWIN E24 \$10,000



IRELANDS GIPPSLANDER G27 \$34,000



IRELANDS FOURMILE F34 \$15,000



IRELANDS FELIX F21 \$10,000



IRELANDS ANGUS

FEMALE ON PROPERTY SALE

TUESDAY 15 OCTOBER 2013

'29 years of proven breeding'

60 ANGUS STUD FEMALES

On property at

"Ivydell" Palmers Rd Kyeamba via Wagga Wagga NSW 2650

OPEN DAY MONDAY 14 OCTOBER 2013

1pm Including BBQ dinner

SALE DAY INSPECTIONS from 10am

SALE 12 Noon

Before the sale please join us for a complimentary Angus beef bbq

For information please visit... www.irelandsangus.com.au

Please bring this catalogue to the sale



Elders Wagga | 0414 329 557
Jim Bruce | 0419 600 355
Andy McGeoch | 0418 737 470
Ross Milne | 0408 057 558
Joe Wilkes | 0428 317 059
Glenn Fordyce | 0427 694 643
Tim Wright | 0429 679 410



Landmark Wagga | 02 6921 1511
Kevin Norris | 0419 482 151
Ray Atwell | 0402 836 136
Jarrod Slattery | 0428 695 700
Andrew Wishart | 0407 424 706
Peter Godbolt | 0457 591 929



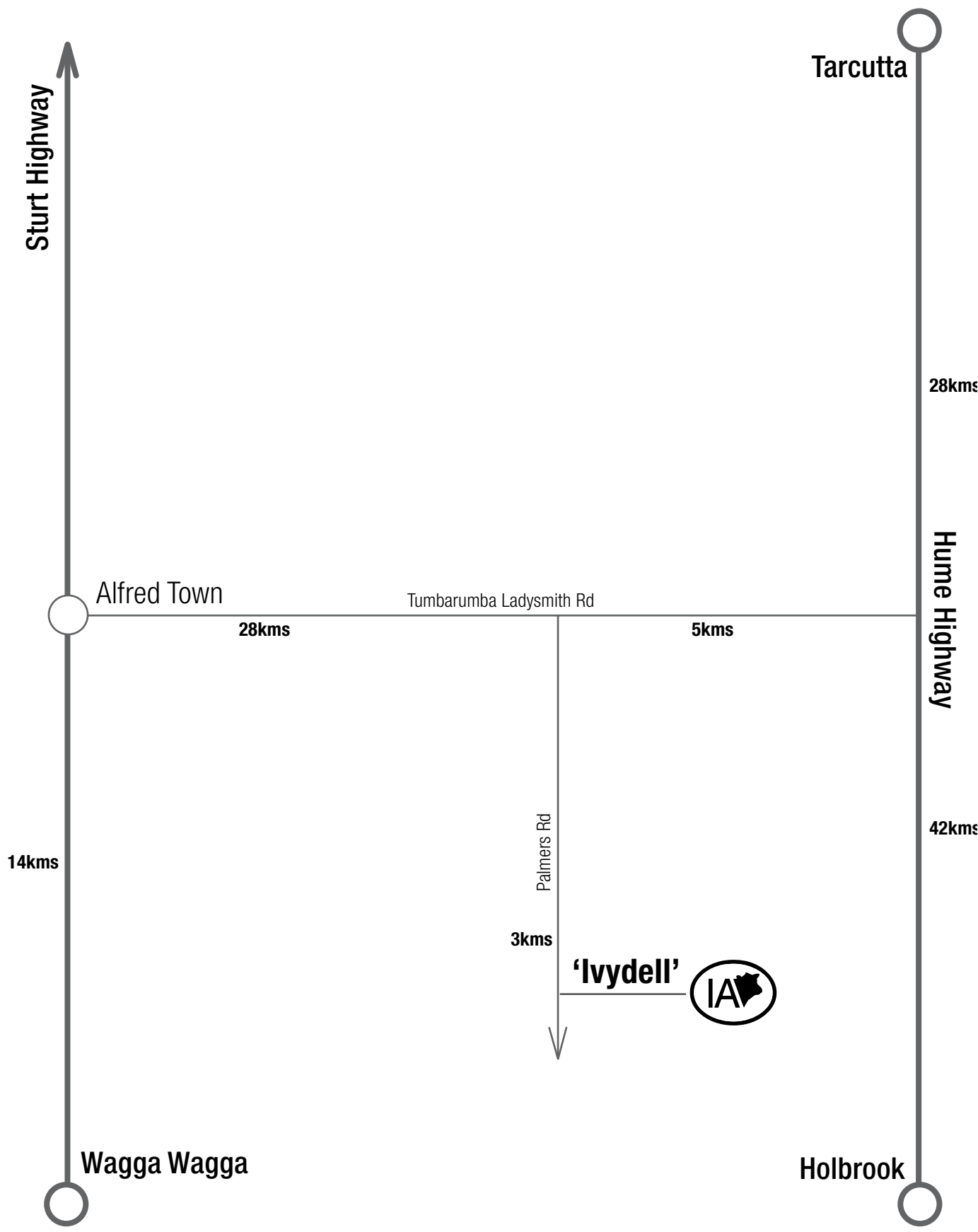
COREY & PRUE IRELAND

Phone: 02 6928 1560
Fax: 02 6928 1550
Mobile: 0409 182 884
Email: info@irelandsangus.com.au

WILLIE MILNE

Mobile: 0428 793 521

How to find Us



Trouble finding the place? contact Corey Ireland 0409 182 884

Welcome to Irelands Angus

Dear Angus Breeder

Welcome to our 2013 Spring female sale. As our program continues to develop we have the opportunity to offer some of our very best breeding females. We don't want to have a female sale that is just our culls but in fact we want to offer the top end to the market with cows that are young yet from proven genetics to allow breeders to get real value for money and great assets to their breeding program.

For many years our program was based around 3 cow families which was great but did not give our clients the variety of genetics they wanted. How were we going to change this, was the question. We spend a lot of time studying pedigrees and working through some of the oldest high performing cow lines.

To this end we added the Quamby herd which was backed by 75 years of breeding, then the Victoree herd with over 50 years of breeding then the Geramy herd which was created on some of Te Mania's best old cow families from New Zealand. This combination has given us some extraordinary genetic variety but backed by generations of rock solid genetics. This, we believe has provided consistency and strength to our program.

We have perhaps ventured in a different direction to most by selecting cows that have the real attributes that Angus cows are known for, fertility, doing ability, milking ability and longevity. We are excited that we can reinvigorate these family lines and keep them at the forefront of our industry. They are cows that don't have the best breed plan data but we know have the strength to survive in the environment in which we live.

Many of the cow lines offered in our sale you may have never heard of but as I have said have been around longer than you and I. We are proud to be offering these genetics to other breeders across the country.

We live by the philosophy "The true genetic strength of a female is more than just figures on paper it is her ability to produce excellence on a consistence basis"

I would again like to thank our dedicated team for their endless hours of hard work. It is certainly appreciated.

We thank you for your interest in our program and look forward to seeing you on open day and sale day. If you have any queries please don't hesitate to give me a call.

Cheers,

Corey.



Corey, Will, Blake, Charlie & Prue Ireland



Willie Milne



Jess Fletcher



Anita Withers

Sale Information

INSPECTION

We invite anyone interested in the cattle to inspect them before the sale so we can give you the necessary time and information to ensure you are selecting the product right for your program. If you are unable to do so then inspections will be from 1pm on Monday 14 October at 1pm followed by a BBQ dinner. Sale time is 12noon Tuesday 15 October 2013. Please phone Corey to make a time suitable to inspect the cattle.

DELIVERY

No cattle will be delivered on the day of the sale. We will have transport representatives available on the day. It will be our intention to ensure we can help organise the most efficient and safest way to deliver all of the cattle to their new homes. For further information please contact Corey on 0409 182 884.

REBATE

Outside agents that are accompanying a purchaser to the sale are entitled to a 2.5% outside agents rebate. To qualify the agent must register with Ireland's, the agent or in writing or by fax no later than 24 hours before the sale.

HEALTH

The herd is a TB & Brucellosis free herd. The herd is a protected JD herd. All females have been vaccinated and 7 in 1 and older females have their annual booster. All cows have been drenched with C ydectin.

PHONE BIDDING

If you are unable to make the sale phone bidding can be arranged by contacting the agent or Corey on 0409 182 884.

INSURANCE

We encourage you to insure your purchased lot/s. All care but no responsibility will be taken after the fall of the hammer. It is the purchaser's responsibility for any injury or death. An insurance agent will be in attendance on sale day to cover your requirements.

AIR FACILITIES

Wagga and Albury have airports with daily flights from Melbourne and Sydney. For pick up and drop off please contact either the agents or Corey on 0409 182 884.



CATERING

Complimentary morning and afternoon tea, coffee and cool drinks will be provided on the day and an Angus Beef BBQ before the sale.

ACCOMMODATION

We can arrange accommodation for you either in Wagga Wagga, Holbrook or Tarcutta. Please contact us in plenty of time so we can ensure accommodation.

NUTRITION

Our females have been prepared on grass and supplementary hay through winter.

AFTER SALES SERVICE

We are keen to follow our cattle and ensure they are working in your program to achieve the best possible results. We encourage open communication at all times to monitor progress.

Further information
please contact:

Corey Ireland | 0409 182 884

GUARANTEE

To the best of our knowledge all of the cattle are all in sound working order at the time of the sale. If during the next 18 months, an animal becomes infertile or breaks down due to reasons other than illness, injury or disease contracted after leaving Ireland's, we will:

1. Provide you with a satisfactory replacement as quickly as is practical so as to minimise the disruption to your program or
2. If a replacement is not available, issue you with a full credit (minus salvage value) for the purchase of any one animal at the next Ireland's sale. In some cases buyers maybe requested to supply a veterinary report.

This guarantee is in addition to normal terms and conditions governing auction sales and as such the vendors decision will be final.

It is important to understand that normal care must be taken and good husbandry practices observed, as we cannot replace an animal that is injured or dies for any reason. As such, we recommend you insure animals against injury.

DISCLAIMER

Whilst all due care and attention has been paid to accuracy in the compilation of this catalogue and the information neither the vendors, selling agents or representatives thereof assume any responsibility what so ever for the correctness, use or interpretation of the information of animals included herein.



FEMALE KEY

NIKKI

This female line was introduced to our program when Back Track Girl 195 was Imported from New Zealand back at the time of our establishment. This cow family has been so successful for us and exclusive to our program with only a few females ever sold.

Famous Females from this line include Girl H25 who was Grand champion female Canberra Royal 1991, Nikki M1 who was Grand champion female in Brisbane and Adelaide Royals 1995, Nikki Q1 who was Junior champion female Melbourne Royal 1996 and Murry Forsyth Junior female of the year.

Number of Females from this line in the Catalogue: 3

PRINCESS

The Princess family was introduced to our program through the addition of the Victoree herd. The family has been a high producing line for the breed over many years originating from a Scottish cow line.

Famous Females and Males from this line include Victoree Princess F32 who sold for a record \$27,500. The most famous male from this line at present would have to be Ardrossan Equator A241.

Number of Females from this line in the Catalogue: 6

ECLYPTA

One of the original cow families that were Imported from New Zealand. The dominant Eclipta being Back Track Eclipta 190. This amazing Angus matron bred the house down with real consistency and ability to breed.

Famous Females and Males from this line are too numerous to mention but for us would be Irelands Eldorado, Junior champion bull Melbourne Royal 2010 and Irelands Erwin E24

Number of Females from this line in the Catalogue:4

PLEASURE

This cow family is an old Australian cow family that was introduced to our herd from Mundoo Angus in 2002. The softness and shape of these females are what we want.

Famous Females and Males from this line include Irelands Galaxy G43 the Australian record top priced bull selling for \$117,500 in 2013.

Number of Females from this line in the Catalogue:1

ELLA

This cow family was introduced at our establishment through the Imported New Zealand heifer Back Track Diana 202. This families ability to breed is extraordinary.

Famous Females and Males from this line include 3 National champions, high selling bulls and high producing females.

Number of Females from this line in the Catalogue:4

VICKY

This family was introduced from Fernleigh Angus via Merrigrange Vicky H43 who was an extraordinary cow.

Famous Females and Males from this line include Vicky D114 and H43 arguably two of the most decorated Angus cows in the country. Numerous bulls have influenced the breed from this family.

Number of Females from this line in the Catalogue:6

QUIET

This family was introduced through the Victoree herd. The Quiet family

originated from the fantastic old Glen Arm Quiet family.

Famous Females and Males from this line include the great Victoree Quiet F27 cow who won grand champion female Melbourne Royal 1989.

Number of Females from this line in the Catalogue:4

DREAM

The Dream family was introduced to our program via Banquet Dream Q117. This family originated from a great old New Zealand Cow family which was imported by Banquet.

Famous Females and Males from this line the obvious is Banquet Dream M41 who has sold over \$800k of progeny including sons to a record of \$50,000.

Number of Females from this line in the Catalogue:2

BUNYIP

A strong reliable breeding family that originated from Te Mania in New Zealand. This family was Introduced to our program via Geramy and Tibooburra.

Famous Females and Males from this line include a National champion heifer and some outstanding commercial sires.

Number of Females from this line in the Catalogue:1

TULIP

This family was established from merrigrange and introduced to our program again from the Geramy influence.

Famous Females and Males from this line again include generations of rock solid performance.

Number of Females from this line in the Catalogue:1

DORIS

This family was established from Forres In Queensland. The family was introduced through the geramy herd.

Famous Females and Males from this line include Raff Midland Z204 who has impacted the breed.

Number of Females from this line in the Catalogue:1

TESSIE

This family originated from The Basin is SA. The family was introduced into our program from the Geramy herd.

Famous Females and Males from this line includes several generations of sound fertile cows and rock solid commercial bulls.

Number of Females from this line in the Catalogue:1

ELIZABETH

This family again originated from TeMania in New Zealand and was Introduced through the Geramy herd.

Famous Females and Males from this line include several generations of fantastic cows and rock solid commercial bulls

Number of Females from this line in the Catalogue:1



WARGOONA

This line originated from Te Mania and was Introduced into our herd due to the consistency of the family.

Famous Females and Males from this line for us is Irelands Fletcher F1 who sold for \$43,000 and Irelands Gapsted G25 who sold for \$54,000 and Irelands Hierarchy H152 who sold for \$20,000.

Number of Females from this line in the Catalogue:2

ROSEBUD

This cow family originated from New Zealand. The family was Introduced into our herd via embryos and later a donor cow.

Famous Females and Males from this line include many champion bulls and females over the years including Ardrossan Admiral A2 In recent times.

Number of Females from this line in the Catalogue:2

BLACKCAP

This female line originated from R&J Ranch In the USA. Imported by Tibooburra in the 80's and introduced to our herd in 2004.

Famous Females and Males from this line include high price females from the Vermont dispersal and our Blackcap C21 who was Reserve Senior Champion female Melbourne royal 2010.

Number of Females from this line in the Catalogue:2

WILCOOLA

The Wilcoola family was established at Merrigrange and needs no introduction to the Angus breed.

Famous Females and Males from this line are to numerous to mention but have been so successful for so many generations.

Number of Females from this line in the Catalogue:1

DELL

This is one of the oldest female lines in Australia deriving from the Quamby herd which is over 75 years old.

Famous Females and Males from this line rock solid females and males for generations that have stood the test of time.

Number of Females from this line in the Catalogue:1

BELLE

This is one of the oldest female lines in Australia deriving from the Quamby herd which is over 75 years old.

Famous Females and Males from this line rock solid females and males for generations that have stood the test of time.

Number of Females from this line in the Catalogue:2

FOREVER

This is one of the oldest female lines in Australia deriving from the Quamby herd which is over 75 years old.

Famous Females and Males from this line rock solid females and males for generations that have stood the test of time.

Number of Females from this line in the Catalogue:1

WATTLE

This is one top quality female lines in Australia deriving from the Wattle-top via the Quamby herd.

Famous Females and Males from this line rock solid females and males for generations that have stood the test of time.

Number of Females from this line in the Catalogue:3

NOLA

This is one of the oldest female lines in Australia deriving from the Victoree herd which is over 50 years old.

Famous Females and Males from this line rock solid females and males

for generations that have stood the test of time.

Number of Females from this line in the Catalogue:1

LORETTA

This is one of the oldest female lines in Australia deriving from the Victoree herd which is over 50 years old.

Famous Females and Males from this line rock solid females and males for generations that have stood the test of time.

Number of Females from this line in the Catalogue:2

EVENTUNE

This is one of the oldest female lines in Australia deriving from the Victoree herd which is over 50 years old.

Famous Females and Males from this line rock solid females and males for generations that have stood the test of time.

Number of Females from this line in the Catalogue:1

POWERLADY

This is one of the oldest female lines in Australia deriving from the Land-fall herd which is over 50 years old.

Famous Females and Males from this line rock solid females and males for generations that have stood the test of time.

Number of Females from this line in the Catalogue:1

LOWAN

This family again originated from TeMania in New Zealand and introduced Into our program through the Victoree herd.

Famous Females and Males from this line rock solid females and males for generations that have stood the test of time and been very successful for Te Mania.

Number of Females from this line in the Catalogue:1

TWINKLE

This is one of the oldest female lines in Australia deriving from the Barwidgee herd which is over 50 years old.

Famous Females and Males from this line rock solid females and males for generations that have stood the test of time.

Number of Females from this line in the Catalogue:1

MAORI MAID

This is one of the oldest female lines in Australia deriving from the Victoree herd which is over 50 years old.

Famous Females and Males from this line rock solid females and males for generations that have stood the test of time.

Number of Females from this line in the Catalogue:1

ELMUNGIE

This is one of the oldest female lines in Australia deriving from the Quamby herd which is over 75 years old.

Famous Females and Males from this line rock solid females and males for generations that have stood the test of time.

Number of Females from this line in the Catalogue:1

SPES

This is one of the oldest female lines in Australia deriving from the Victoree herd which is over 50 years old.

Famous Females and Males from this line rock solid females and males for generations that have stood the test of time.

Number of Females from this line in the Catalogue:1

SALE LOTS



Lot 1 IRELANDS NIKKI D55



DOB: 07/10/2008

AMFU NHFU CAFU DDFU

C A FUTURE DIRECTION 5321
KOOJAN HILLS SOMETHIN SPECIAL (AI)
KOOJAN HILLS U23 (AI)

SIRE: CGKA50 ALPINE ACCOUNT A50 (AI)

B S S LIMITED DESIGN
LITTLE MEADOWS EDWINA X3 (AI)
LITTLE MEADOWS EDWINA U3 (AI) (ET)


VICTOREE SCOTCH CAP K46 (AI) (ET)
IRELANDS WINDSOR W1 (AI)
YURNGA ECLYPTA L1 (AI) (ET)

DAM: VICY2 IRELANDS NIKKI Y2

BON VIEW EMULATION EXT 473
LONESTAR NIKKI R7 (AI)
LONESTAR POWER NIKKI (AI) (TW)

Notes: A top young cow who joined our donor program last year. A super volume cow with real softness and power. Her pedigree combines one of our best cow lines. We have retained her last bull calf for use within our herd. An outstanding donor cow.

Purchaser:..... \$:

	S																
	CE Dir	CE Dtrs	Gest Lgh	Birth Wt.	200 Wt.	400 Wt.	600 Wt.	MC Wt.	Milk	Scrotal	D to Calv	Carc Wt.	EMA	Rib Fat	Rump Fat	RBY%	IMF%
EBV	-0.8	--	-2.1	+5.2	+43	+73	+90	+77	+12	+0.7	--	+52	+1.6	-0.6	+0.3	-0.1	+0.3
ACC	43%		51%	79%	67%	71%	67%	58%	44%	51%		59%	49%	61%	63%	52%	49%

Traits Observed: BWT,400WT,FAT,EMA,IMF

Joining Details: Depastured with Irelands Galaxy G43 from 20/11/12 to 20/1/13. PTIC.



Above: Lot 2 Irelands Pleasure C4



Lot 2 IRELANDS PLEASURE C4 (AI)



DOB: 02/08/2007

AMF NHF CAF DDFU

C A FUTURE DIRECTION 5321
ARDROSSAN DIRECTION W109 (AI) (ET)

ARDROSSAN WILCOOLA Q71 (AI) (ET)

SIRE: NENZ181 KAROO W109 DIRECTION Z181

TE MANIA MODEST M126

KAROO FLATS MADONNA V56 (AI)

KAROO FLATS MADONNA T192

ATAHUA LEGACY 26-90 (NZ) (AI) (ET)

BANQUET ARROGANCE V100 (AI)

KINGFIELD WIVEM J69+89

DAM: VICA23 IRELANDS PLEASURE A23 (AI)

GLEN ISLAY TORONTO 22B (IMP CAN) (AI)

MUNDOO PLEASURE R42

MUNDOO PLEASURE K38

Notes: An outstanding breeding cow. Her record to date is Extraordinary. Her first son sold to Hicks Pastoral co for \$12,500 as a yearling, then her second son sold for an Australian Record price of \$117,500. Her third calf is an outstanding heifer who we are retaining. We have flushed her this year and have rejoined her to the same mating as Galaxy. Another outstanding cow with an amazing production record to date.

Purchaser:..... \$:



September 2013 Angus Australia BREEDPLAN

	CE Dir	CE Dtrs	Gest Lgth	Birth Wt.	200 Wt.	400 Wt.	600 Wt.	MC Wt.	Milk	Scrotal	D to Calv	Carc Wt.	EMA	Rib Fat	Rump Fat	RBY%	IMF%
EBV	-0.5	+1.1	-2.3	+5.3	+42	+81	+103	+93	+18	+1.8	-3.7	+58	+6.0	+1.1	+0.8	+0.4	+1.3
ACC	53%	45%	59%	78%	70%	73%	70%	63%	58%	61%	42%	65%	58%	67%	68%	60%	57%

Traits Observed: BWT,400WT,FAT,EMA,IMF

Joining Details: AI'ed to Irelands Deltroit D2 10/8/2013.



Lot 3 IRELANDS PRINCESS E201



DOB: 19/11/2009

AMFU NHFU CAFU DDF

BOOROOMOOKA UNDERTAKEN U170 (AI)

BOOROOMOOKA UNDERTAKEN Y145

BOOROOMOOKA UAAISE U101 (AI)

SIRE: NORC278 RENNYLEA C278 (AI) (ET)

TE MANIA MODEST M126

BOORHAMAN Y55 (AI)

BOORHAMAN W1 (AI)

MERRIC RIVERS NEW DESIGN T149 (AI)

CLAMON X150 (AI)

CLAMON V156 (AI)

DAM: VVWA38 VICTOREE A38

B/R NEW DESIGN 323

VICTOREE T8 (AI)

VICTOREE PRINCESS Q111 (AI) (ET)

Purchaser:..... \$:

Notes: A long soft easy doing young cow who I love. She has so much potential ahead of her. The Princess cow line has just been so successful throughout the country. Her first son sold for \$7000 and we have retained her heifer calf from last year. A top young cow with a great bull calf at foot.



September 2013 Angus Australia BREEDPLAN

	CE Dir	CE Dtrs	Gest Lgth	Birth Wt.	200 Wt.	400 Wt.	600 Wt.	MC Wt.	Milk	Scrotal	D to Calv	Carc Wt.	EMA	Rib Fat	Rump Fat	RBY%	IMF%
EBV	+1.8	-0.9	--	+4.2	+38	+85	+97	+79	+13	+3.3	-4.9	+56	+5.5	+1.1	+1.2	+0.0	+2.4
ACC	43%	37%		75%	66%	70%	66%	56%	45%	55%	35%	59%	50%	62%	64%	53%	50%

Traits Observed: BWT,400WT,FAT,EMA,IMF

Joining Details: Bull Calf at foot J353 born 1/9/13 by Irelands Fletcher F1.



Lot 4 IRELANDS ELLA E76



DOB: 03/10/2009

AMFU NHFU CAFU DDFU

C A FUTURE DIRECTION 5321

KOOJAN HILLS SOMETHIN SPECIAL (AI)

KOOJAN HILLS U23 (AI)

SIRE: CGKA50 ALPINE ACCOUNT A50 (AI)

B S S LIMITED DESIGN

LITTLE MEADOWS EDWINA X3 (AI)

LITTLE MEADOWS EDWINA U3 (AI) (ET)

ATAHUA LEGACY 26-90 (NZ) (AI) (ET)

BANQUET ARROGANCE V100 (AI)

KINGFIELD WIVEM J69+89

DAM: VICA24 IRELANDS ELLA A24 (AI)

PINEBANK 627/89

IRELANDS ELLA W16 (AI)

LONESTAR ELLA T4 (AI)

Purchaser:..... \$:

Notes: One of my favorite cows. I just love her shape and capacity. This cow family is just so reliable and this young cow is no exception. Her first heifer calf we sold for \$5000 and have retained her last heifer calf. She has an impressive heifer calf at foot. A great outfit.



September 2013 Angus Australia BREEDPLAN

	CE Dir	CE Dtrs	Gest Lgth	Birth Wt.	200 Wt.	400 Wt.	600 Wt.	MC Wt.	Milk	Scrotal	D to Calv	Carc Wt.	EMA	Rib Fat	Rump Fat	RBY%	IMF%
EBV	-2.6	--	-1.7	+6.2	+47	+76	+96	+92	+15	--	--	+54	+2.4	-0.6	+0.2	+0.4	+0.3
ACC	44%		52%	78%	67%	69%	66%	58%	44%			58%	48%	61%	62%	51%	49%

Traits Observed: BWT,400WT,FAT,EMA,IMF

Joining Details: Heifer Calf at foot J346 born 27/8/13 by Maturi Outlier F031.



Above: Lot 5 Irelands Ecllypta E23



Lot 5 IRELANDS ECLYPTA E23 (AI) (ET)



DOB: 30/07/2009

AMFU NHFU CAFU DDFU

N BAR EMULATION EXT
LEACHMAN RIGHT TIME
LEACHMAN ERICA 0025

SIRE: USA24J BT RIGHT TIME 24J

TRAVELER 124 G D A R
SITZ EVERELDA ENTENSE 1905
SITZ EVERELDA ENTENSE 1791

KAHARAU HERMES 653
SPRINGDALE HERCO 600 (ET)
SPRINGDALE 604 AB ET

DAM: VICB14 IRELANDS ECLYPTA B14 (AI)

B C C BUSHWACKER 41-93
IRELANDS ECLYPTA Y17 (AI) (ET)
YURNGA ECLYPTA L1 (AI) (ET)

Notes: An outstanding breeding cow. Her full brother we have used heavily in our herd and sold him for \$10,000 to Waverley Station. This young cow is a real powerhouse. We have flushed her with great success and look forward to her progeny coming through. Her first calf is a heifer and we have retained her. She has an outstanding Galaxy bull calf at foot. An Extraordinary opportunity.

Purchaser:..... \$:



September 2013 Angus Australia BREEDPLAN

	CE Dir	CE Dtrs	Gest Lgth	Birth Wt.	200 Wt.	400 Wt.	600 Wt.	MC Wt.	Milk	Scrotal	D to Calv	Carc Wt.	EMA	Rib Fat	Rump Fat	RBY%	IMF%
EBV	-1.9	-0.3	-1.9	+5.5	+46	+81	+99	+76	+15	+1.1	-2.5	+59	+4.4	+0.0	+0.0	+0.7	+0.7
ACC	55%	50%	60%	77%	69%	71%	68%	63%	56%	57%	47%	63%	57%	66%	67%	59%	58%

Traits Observed: BWT,400WT,FAT,EMA,IMF

Joining Details: Bull Calf at foot J356 born 3/9/13 by Irelands Galaxy G43.



Above: Lot 6 Irelands Princess D8



Lot 6 IRELANDS PRINCESS D8 (AI) (ET)



DOB: 27/03/2008

AMF NHFU CAF DDF

TE MANIA KELP K207 (AI)
TE MANIA MODEST M126
TE MANIA BROLGA K187

SIRE: NAQW107 ARDROSSAN MODEST W107 (AI)

PAPA EQUATOR 2928
ARDROSSAN PRINCESS U101 (AI) (ET)
ARDROSSAN PRINCESS N6 (AI) (ET)

B/R NEW DESIGN 036
B/R NEW DESIGN 323
B/R RUBY OF TIFFANY 155

DAM: VVWT8 VICTOREE T8 (AI)

V D A R NEW TREND 933
VICTOREE PRINCESS Q111 (AI) (ET)
VICTOREE PRINCESS N8 (AI)

Notes: A big volume Princess cow who is breeding so well. She is soft easy doing cow who milks so well and is very sound. She has all the things you would expect from a great Angus cow. We have an outstanding bull calf which we have ear marked to use in our program. Real donor potential. She has a great heifer calf at foot.

Purchaser:..... \$:



September 2013 Angus Australia BREEDPLAN

	CE Dir	CE Dtrs	Gest Lgth	Birth Wt.	200 Wt.	400 Wt.	600 Wt.	MC Wt.	Milk	Scrotal	D to Calv	Carc Wt.	EMA	Rib Fat	Rump Fat	RBY%	IMF%
EBV	-2.9	-1.6	-3.2	+5.0	+40	+74	+85	+73	+14	+3.1	-6.3	+46	+2.4	+0.2	+0.6	+0.1	+1.3
ACC	51%	42%	58%	79%	70%	71%	69%	62%	57%	58%	45%	61%	53%	64%	64%	56%	54%

Traits Observed: BWT,400WT,FAT,EMA,IMF

Joining Details: Heifer calf at foot J360 born 10/9/13 by Maturi outlier F031.



Above: Lot 7 Irelands Vicky F38



Lot 7 IRELANDS VICKY F38 (AI)



DOB: 18/08/2010

AMFU NHFU CAFU DDFU

B/R NEW DESIGN 036

TE MANIA UNLIMITED U3271 (AI) (ET)

TE MANIA LOWAN R426 (AI) (ET)

SIRE: NZE15009004444 WOODBANK 444 AB

BRACKENFIELD RADAR

WOODBANK 94

WOODBANK 758

KOOJAN HILLS SOMETHIN SPECIAL (AI)

ALPINE ACCOUNT A50 (AI)

LITTLE MEADOWS EDWINA X3 (AI)

DAM: VICD14 IRELANDS VICKY D14

VERMILION YELLOWSTONE

IRELANDS VICKY Z15 (AI) (ET)

FERNLEIGH VICKY S103 (AI) (ET)

Notes: A beautiful young cow. This is Charlie's heifer he broke in for a ballot heifer at the Round up. She is so quiet and in true Vicky style has a great udder and is soft and easy doing. We have retained her first calf. She will calve prior to sale. An outstanding young cow with donor potential.

Purchaser:..... \$:



September 2013 Angus Australia BREEDPLAN

	CE Dir	CE Dtrs	Gest Lgth	Birth Wt.	200 Wt.	400 Wt.	600 Wt.	MC Wt.	Milk	Scrotal	D to Calv	Carc Wt.	EMA	Rib Fat	Rump Fat	RBY%	IMF%
EBV	+2.5	+0.6	-3.6	+2.6	+38	+64	+81	+72	+12	+1.6	-2.8	+52	+4.5	+0.2	+1.2	+0.1	+1.7
ACC	45%	38%	54%	73%	65%	66%	68%	60%	49%	54%	35%	58%	48%	60%	61%	51%	48%

Traits Observed: BWT,600WT,FAT,EMA,IMF

Joining Details: PTIC to Raff Synergy E96, to calve prior to sale.



Above: Lot 8 Irelands Vicky E19



Lot 8 IRELANDS VICKY E19 (AI) (ET)



DOB: 25/07/2009

AMFU NHFU CAFU DDFU

B/R NEW DESIGN 036

TE MANIA UNLIMITED U3271 (AI) (ET)

TE MANIA LOWAN R426 (AI) (ET)

SIRE: NZE04379 TE MANIA INFINITY 04 379 AB

TE MANIA PRINCE 153-93

TE MANIA 95102

TE MANIA 92F006 AB

VERMILION DATELINE 7078

VERMILION YELLOWSTONE

VERMILION B JESTRESS 3912

DAM: VICZ15 IRELANDS VICKY Z15 (AI) (ET)

TC STOCKMAN 2164

FERNLEIGH VICKY S103 (AI) (ET)

MERRIGRANGE VICKY H43+88 (AI) (ET)

Notes: These Vicky's can do no wrong. This young cow is a big powerful deep bodied cow who has a beautiful udder. She joined our donor program and flushed successfully. I am excited to see the progeny as I know she will breed the house down. A great cow from a spectacular cow family. Everyone needs a bit of this in their herd.

Purchaser:..... \$:



September 2013 Angus Australia BREEDPLAN

	CE Dir	CE Dtrs	Gest Lgth	Birth Wt.	200 Wt.	400 Wt.	600 Wt.	MC Wt.	Milk	Scrotal	D to Calv	Carc Wt.	EMA	Rib Fat	Rump Fat	RBY%	IMF%
EBV	-0.3	-1.8	-3.7	+3.9	+40	+80	+98	+88	+10	+2.5	-4.6	+57	+4.8	+1.0	+1.2	-0.4	+2.5
ACC	60%	56%	62%	79%	71%	72%	70%	65%	59%	60%	52%	65%	60%	67%	68%	62%	60%

Traits Observed: BWT,400WT,FAT,EMA,IMF

Joining Details: Depastured with Irelands Galaxy G43 from 20/11/12 to 20/1/13. PTIC.



Lot 9 IRELANDS QUIET E89



DOB: 01/11/2009

AMF NHFU CAFU DDFU

BOOROOMOOKA UNDERTAKEN U170 (AI)

BOOROOMOOKA UNDERTAKEN Y145

BOOROOMOOKA UAAISE U101 (AI)

SIRE: NORC278 RENNYLEA C278 (AI) (ET)

TE MANIA MODEST M126

BOORHAMAN Y55 (AI)

BOORHAMAN W1 (AI)

SCOTCH CAP

DULVERTON LEVIATHAN L59 (AI) (ET)

BLACKCAP LADY 3187 G D A R

DAM: VVWR303 VICTOREE QUIET R303 (AI) (ET)

HOFF HI HAND S C 654

VICTOREE QUIET L1 (AI) (ET)

VICTOREE QUIET F27.

Notes: A complete young cow who is so sound and the soft easy doing type. She is breeding really well with her first son selling for \$6000 to Ken Connley from Omeo. We have retained her last heifer calf. A great young cow with a great future. He dam is a Grand old cow who we only lost this Autumn.

Purchaser:..... \$:

	September 2013 Angus Australia BREEDPLAN																
	CE Dir	CE Dtrs	Gest Lgth	Birth Wt.	200 Wt.	400 Wt.	600 Wt.	MC Wt.	Milk	Scrotal	D to Calv	Carc Wt.	EMA	Rib Fat	Rump Fat	RBY%	IMF%
EBV	+2.6	-0.4	-3.0	+2.9	+30	+64	+77	+68	+11	+1.9	-2.7	+44	+1.1	+0.7	+0.3	-1.0	+2.1
ACC	47%	40%	52%	79%	68%	72%	68%	59%	49%	58%	41%	61%	52%	64%	65%	55%	52%

Traits Observed: BWT,400WT,FAT,EMA,IMF

Joining Details: Heifer calf at foot J332 born 6/8/13 by Irelands Galaxy G43.



Above: L-R Irelands Ella D52 (Sold \$4000 to Four-O-Eight Angus) and Irelands Ecllypta E2 (Sold \$7000 to EJ Angus) Sydney Royal 2010.



Above: Lot 10 Irelands Dream D21



Lot 10 IRELANDS DREAM D21 (AI) (ET)



DOB: 28/07/2008

AMFU NHFU CAFU DDFU

WAIHOHONU 113
KAHARAU LAIMBEER 438
KAHARAU 5270

SIRE: NZE0122 BURKE 22 OF TURIROA

RANGATIRA EMBLEM 911
FLOSS OF TURIROA
WISDOM OF TURIROA

SCOTCH CAP
MERRIGRANGE SCOTCH WHISKY M15 (AI) (ET)
ARDROSSAN WILCOOLA K2 (AI) (ET)

DAM: VONQ117 BANQUET DREAM Q117 (AI)

ATAHUA LEGACY 26-90 (NZ) (AI) (ET)
BANQUET KIWI DREAM (AI)
1203 OF DELMONT (NZ) (AI)

Notes: A big powerful cow who is bred in the purple. She is a maternal sister to KO's super cow Vermont Dream Y301. Her first son sold for \$7000 this autumn and we have retained her heifer calf. An outstanding breeding cow with an extraordinary pedigree.

Purchaser:..... \$:



September 2013 Angus Australia BREEDPLAN

	CE Dir	CE Dtrs	Gest Lgth	Birth Wt.	200 Wt.	400 Wt.	600 Wt.	MC Wt.	Milk	Scrotal	D to Calv	Carc Wt.	EMA	Rib Fat	Rump Fat	RBY%	IMF%
EBV	-2.0	+1.4	-1.9	+6.2	+37	+69	+92	+104	+7	+1.4	+0.2	+43	+0.8	+0.2	-0.7	-0.2	+0.7
ACC	56%	47%	63%	81%	73%	75%	73%	67%	64%	67%	46%	67%	60%	69%	70%	62%	59%

Traits Observed: BWT,400WT,FAT,EMA,IMF

Joining Details: PTIC to Raff Synergy E96, to calve prior to sale.



Lot 11 IRELANDS ELLA E65



DOB: 10/09/2009

AMFU NHFU CAFU DDF

BOOROOMOOKA USA U13 (AI)
BOOROOMOOKA WONBRI W319
BOOROOMOOKA TRACY T4 (AI) (ET)

SIRE: VICC22 IRELANDS COSGROVE C22

ATAHUA WESTPOINT AB
LONESTAR ELLA T4 (AI)
KYLOH ELLA Q7

29194 OF TE MANIA
ATLAS 941 OF TURIROA (ET)
582 OF TURIROA

DAM: VICB15 IRELANDS LASS B15 (AI)

KOA CRUZ U32 (AI)
IRELANDS LASS Y28
KYLOH LASS Q35

Notes: A big long powerful breeding cow. Her sire was a powerful bull who we sold for \$6000 to Qurindi. This young cow is from the Ella family who can really breed well and she is no exception. She has a very good bull calf at foot.

Purchaser:..... \$:



September 2013 Angus Australia BREEDPLAN

	CE Dir	CE Dtrs	Gest Lgth	Birth Wt.	200 Wt.	400 Wt.	600 Wt.	MC Wt.	Milk	Scrotal	D to Calv	Carc Wt.	EMA	Rib Fat	Rump Fat	RBY%	IMF%
EBV	+0.4	--	--	+3.7	+32	+61	+75	--	--	--	--	+39	+0.6	-1.6	-2.0	+0.6	+0.1
ACC	35%			75%	63%	67%	62%					55%	45%	60%	61%	49%	46%

Traits Observed: BWT,400WT,FAT,EMA,IMF

Joining Details: Bull calf at foot J299 born 26/5/13 by Raff Expedition E264. Re-joined to Irelands Dozer D9. PTIC.



Lot 12 IRELANDS BUNYIP G5 (AI)



DOB: 09/03/2011

AMFU NHFU CAF DDFU

TWIN VALLEY PRECISION E161
BR MIDLAND
BR ROYAL LASS 7036-19

SIRE: QRFZ204 RAFF MIDLAND Z204 (AI) (ET)

RAFF ULTIMATE U27 (AI) (ET)
RAFF DORIS W10
RAFF DORIS S128 (AI) (ET)

VERMILION YELLOWSTONE
IRELANDS ZEMAN Z17 (AI) (ET)
FERNLEIGH VICKY U48 (AI) (ET)

DAM: NZGC91 GERAMY BUNYIP C91

GERAMY WESTERNPORT W30 (AI)
GERAMY BUNYIP Z51
GERAMY PARK BUNYIP K19

Notes: This young cow was a standout as a heifer and has continued to perform. He dam is a great breeding cow from the Tibooburra Bunyip cow family. This heifer is so correct with plenty of length. She has a solid bull calf at foot. She has a big future.

Purchaser:..... \$:



September 2013 Angus Australia BREEDPLAN

	CE Dir	CE Dtrs	Gest Lgth	Birth Wt.	200 Wt.	400 Wt.	600 Wt.	MC Wt.	Milk	Scrotal	D to Calv	Carc Wt.	EMA	Rib Fat	Rump Fat	RBY%	IMF%
EBV	+2.6	+2.1	-5.4	+3.8	+38	+73	+95	+87	+9	+1.8	-2.3	+51	+3.5	+0.6	+1.0	-0.5	+1.8
ACC	46%	38%	58%	78%	71%	71%	68%	60%	55%	57%	37%	61%	52%	64%	64%	54%	52%

Traits Observed: BWT,200WT,400WT,FAT,EMA,IMF

Joining Details: Bull calf at foot J25 born 9/3/13 by Rennylea Blackgold F40. Re-joined to Raff Dynamite D345. PTIC.



Lot 13 IRELANDS TULIP G12 (AI)



DOB: 12/03/2011

AMFU NHFU CAFU DDFU

PAPA POWER 096

PAPA EQUATOR 2928

PAPA ENVIOUS BLACKBIRD 8849

SIRE: NAQA241 ARDROSSAN EQUATOR A241 (AI) (ET)

B/R NEW DIMENSION 7127

ARDROSSAN PRINCESS W38 (AI) (ET)

ARDROSSAN PRINCESS U24 (AI) (ET)

J L B EXACTO 416

ARDROSSAN EXACTO V209 (AI) (ET)

ARDROSSAN WILCOOLA Q10 (AI) (ET)

DAM: NZGY65 GERAMY TULIP Y65

ARDROSSAN TRAVELLER U46 (AI) (ET)

GERAMY TULIP W112

GERAMY PARK TULIP K32

Purchaser:..... \$:



September 2013 Angus Australia BREEDPLAN

	CE Dir	CE Dtrs	Gest Lgth	Birth Wt.	200 Wt.	400 Wt.	600 Wt.	MC Wt.	Milk	Scrotal	D to Calv	Carc Wt.	EMA	Rib Fat	Rump Fat	RBY%	IMF%
EBV	+0.1	-1.1	-3.5	+3.7	+44	+79	+101	+102	+13	+1.9	-2.2	+67	+4.1	-1.2	-1.5	+1.3	+0.7
ACC	54%	48%	60%	79%	72%	72%	70%	63%	60%	57%	42%	64%	55%	67%	67%	58%	56%

Traits Observed: BWT,200WT,400WT,FAT,EMA,IMF

Joining Details: Heifer calf at foot J119 born 9/4/13 by Irelands Fletcher F1. Re-joined to Raff Dynamite D345. PTIC.



Above: Geramy Tulip W62 – Sister to Lot 13's Grandmother (Geramy Tulip W112).



Lot 14 IRELANDS QUIET G29 (AI)



DOB: 25/03/2011

AMF NHFU CAFU DDF

PAPA POWER 096
PAPA EQUATOR 2928
PAPA ENVIOUS BLACKBIRD 8849

SIRE: NAQA241 ARDROSSAN EQUATOR A241 (AI) (ET)

B/R NEW DIMENSION 7127
ARDROSSAN PRINCESS W38 (AI) (ET)
ARDROSSAN PRINCESS U24 (AI) (ET)

MERRIC RIVERS NEW DESIGN T149 (AI)
CLAMON X150 (AI)
CLAMON V156 (AI)

DAM: VVWA10 VICTOREE A10

VICTOREE LEGEND L71 (AI) (ET)
VICTOREE QUIET V8
VICTOREE QUIET R114 (AI) (ET)

Notes: Another impressive young A241 daughter. Her dam is a great cow who is just so consistent in her breeding and I would think this cow will be no different. She has a lovely heifer calf at foot.

Purchaser:..... \$:

September 2013 Angus Australia MATING PREDICTOR

	CE Dir	CE Dtrs	Gest Lgth	Birth Wt.	200 Wt.	400 Wt.	600 Wt.	MC Wt.	Milk	Scrotal	D to Calv	Carc Wt.	EMA	Rib Fat	Rump Fat	RBY%	IMF%
EBV	-0.1	-0.2	--	+4.3	+41	+80	+99	+90	+13	+2.5	-3.3	+60	+5.3	-0.1	-0.2	+1.0	+1.5

*Expected average progeny values are provided to assist breeders estimate the outcome of particular mating combinations. **These values are NOT GROUP BREEDPLAN EBVs and should not be published as such.** The actual EBVs for any individual progeny resulting from a particular mating are likely to vary from the expected average values.*

Joining Details: Heifer calf at foot J53 born 23/3/13 by Kunuma F131. Re-joined to Raff Dynamite D345. PTIC.



Above: Victoree Quiet R114, Great Grandam of Lot 14.



Lot 15 IRELANDS ELIZABETH G4 (AI)



DOB: 08/03/2011

AMFU NHFU CAFU DDF

ONEILLS RENOVATOR
TE MANIA KLP K207 (AI)
TE MANIA JAPARA F119.

SIRE: BHRR093 DUNOON REAGAN R093 (AI) (ET)

P S HIGH POCKETS
TE MANIA BEEAC L145 (AI) (ET)
TE MANIA BEEAC H96+88 (AI) (ET)

S A F FOCUS OF E R
MYTTY IN FOCUS
MYTTY COUNTESS 906

DAM: NZGE28 GERAMY ELIZABETH E28 (AI)

IRELANDS ZEMAN Z17 (AI) (ET)
GERAMY ELIZABETH C80
GERAMY ELIZABETH Z77

Notes: A rock solid hard working young cow. She is a heifers first calf and her dam has continued to breed well. This family have a history of solid consistent results. A great young cow with a great fletcher F1 heifer calf at foot.

Purchaser:..... \$:



September 2013 Angus Australia BREEDPLAN

	CE Dir	CE Dtrs	Gest Lgth	Birth Wt.	200 Wt.	400 Wt.	600 Wt.	MC Wt.	Milk	Scrotal	D to Calv	Carc Wt.	EMA	Rib Fat	Rump Fat	RBY%	IMF%
EBV	+4.2	+3.6	-3.1	+2.9	+40	+77	+92	+69	+10	+1.9	-4.5	+58	+3.6	+1.4	+1.8	-0.5	+1.9
ACC	55%	51%	61%	78%	71%	71%	68%	62%	58%	56%	51%	63%	57%	66%	67%	60%	58%

Traits Observed: BWT,200WT,400WT,FAT,EMA,IMF

Joining Details: Heifer calf at foot J121 born 9/4/13 by Irelands Fletcher F1. Re-joined to Raff Dynamite D345. PTIC.



Lot 16 IRELANDS DORIS G13 (AI)



DOB: 12/03/2011

AMFU NHF CAFU DDFU

SUMMITCREST HI FLYER 3B18
SUMMITCREST OUTLOOK
SUMMITCREST BLACKBIRD OG88

SIRE: SEWZ7 HIDDEN VALLEY LOOKOUT Z7 (AI)

G T MAXIMUM
HIDDEN VALLEY EMERALD X115 (AI) (ET)
TE MANIA DANDLOO Q292

C A FUTURE DIRECTION 5321
ARDROSSAN DIRECTION W109 (AI) (ET)
ARDROSSAN WILCOOLA Q71 (AI) (ET)

DAM: NXSE52 TOOPUNTUL DORIS E52 (AI)

ARDROSSAN TRAVELLER U46 (AI) (ET)
TOOPUNTUL DORIS Y99
GERAMY PARK DORIS

Notes: I just love our Z7 daughters. They have been great performers from the beginning. They are so easy care, get in calf, calve easily and milk so well. This heifers mother and grandmother are still in our herd.

Purchaser:..... \$:



September 2013 Angus Australia BREEDPLAN

	CE Dir	CE Dtrs	Gest Lgth	Birth Wt.	200 Wt.	400 Wt.	600 Wt.	MC Wt.	Milk	Scrotal	D to Calv	Carc Wt.	EMA	Rib Fat	Rump Fat	RBY%	IMF%
EBV	+0.1	+0.5	-5.8	+3.4	+34	+72	+91	+90	+10	+1.6	-2.9	+55	+5.2	+0.1	-0.1	+0.6	+1.0
ACC	50%	43%	61%	78%	71%	72%	69%	61%	52%	56%	38%	61%	51%	64%	65%	55%	53%

Traits Observed: BWT,200WT,400WT,FAT,EMA,IMF

Joining Details: Heifer calf at foot J54 born 24/3/13 by Kunuma F131. Re-joined to Granite Ridge Thomas F223. PTIC.



Lot 17 IRELANDS PRINCESS G24



DOB: 17/03/2011

AMFU NHFU CAF DDF

C A FUTURE DIRECTION 5321
ARDROSSAN DIRECTION W109 (AI) (ET)
ARDROSSAN WILCOOLA Q71 (AI) (ET)

SIRE: NENZ181 KAROO W109 DIRECTION Z181

TE MANIA MODEST M126
KAROO FLATS MADONNA V56 (AI)
KAROO FLATS MADONNA T192

MERRIC RIVERS NEW DESIGN T149 (AI)
CLAMON X150 (AI)
CLAMON V156 (AI)

DAM: VVWA38 VICTOREE A38

B/R NEW DESIGN 323
VICTOREE T8 (AI)
VICTOREE PRINCESS Q111 (AI) (ET)

Notes: What a great young cow. Z181 has bred so well for us and his daughters are continuing the tradition. The combination of the great Princess family and Z181 is proving its worth. This heifers dam is still breeding strong today. A good bull calf at foot.

Purchaser:..... \$:



September 2013 Angus Australia BREEDPLAN

	CE Dir	CE Dtrs	Gest Lgth	Birth Wt.	200 Wt.	400 Wt.	600 Wt.	MC Wt.	Milk	Scrotal	D to Calv	Carc Wt.	EMA	Rib Fat	Rump Fat	RBY%	IMF%
EBV	+1.4	+0.5	-3.4	+4.4	+34	+72	+90	+72	+13	+2.8	-5.1	+49	+7.4	+1.6	+1.8	+0.3	+1.9
ACC	51%	46%	58%	77%	71%	71%	68%	62%	57%	56%	42%	62%	55%	66%	66%	58%	56%

Traits Observed: BWT,200WT,400WT,FAT,EMA,IMF

Joining Details: Bull calf at foot J188 born 23/4/13 by Irelands Fletcher F1. Re-joined to Raff Dynamite D345. PTIC.



Lot 18 IRELANDS TESSIE G26 (AI)



DOB: 18/03/2011

AMFU NHFU CAFU DDFU

PAPA POWER 096
PAPA EQUATOR 2928
PAPA ENVIOUS BLACKBIRD 8849

SIRE: NAQA241 ARDROSSAN EQUATOR A241 (AI) (ET)

B/R NEW DIMENSION 7127
ARDROSSAN PRINCESS W38 (AI) (ET)
ARDROSSAN PRINCESS U24 (AI) (ET)

VERMILION YELLOWSTONE
BOORHAMAN A60 (AI) (TW)
BOORHAMAN R44 (AI)

DAM: NZGD143 GERAMY TESSIE D143

ARDROSSAN EXACTO V209 (AI) (ET)
GERAMY TESSIE Z85
GERAMY TESSIE X37 (AI)

Notes: This heifers is from one of my favorite cows. Long, deep bodied and easy doing paints the picture. A241 daughters seem to be performing well. Longevity is spelt out here with this cows, dam, grand dam and great grand dam still breeding in our program today.

Purchaser:..... \$:



September 2013 Angus Australia BREEDPLAN

	CE Dir	CE Dtrs	Gest Lgth	Birth Wt.	200 Wt.	400 Wt.	600 Wt.	MC Wt.	Milk	Scrotal	D to Calv	Carc Wt.	EMA	Rib Fat	Rump Fat	RBY%	IMF%
EBV	-0.4	-0.8	-3.8	+4.6	+45	+83	+109	+111	+10	+2.3	-2.6	+66	+3.9	-1.0	-0.9	+0.7	+1.2
ACC	52%	47%	58%	78%	71%	72%	69%	62%	55%	56%	36%	62%	53%	64%	65%	56%	54%

Traits Observed: BWT,200WT,400WT,FAT,EMA,IMF

Joining Details: Bull calf at foot J60 born 29/3/13 by Rennylea Blackgold F340. Re-joined to Granite Ridge Thomas F223. PTIC.



Lot 19 IRELANDS BELLE G74



DOB: 21/05/2011

AMFU NHFU CAF DDF

B/R NEW DESIGN 036
BOOROOMOOKA THEO T030 (AI)
BOOROOMOOKA QUAIN T Q34

SIRE: NOLZ177 KUNUMA Z177

VICTOREE NOBU (AI)
KUNUMA T62
KUNUMA QUAIN TLY N57 (AI)

G D A R OSCAR 711 (AI) (ET)
CHALE OSCAR N9 (AI)
CHALE SPRINGTIME J12+89 (AI)

DAM: TPAT251 QUAMBY T251

NUAGE HOT STUFF+88 (AI) (ET)
QUAMBY STILE L17
QUAMBY DABELLE F17.

Notes: A complete wedge shaped young cow from a super Angus cow. Her dam is just amazing she looks like a four year old and is still going strong today. This is real longevity when you think about all the droughts she went through and has stood the test of time. A very tidy heifer calf at foot.

Purchaser:..... \$:

September 2013 Angus Australia BREEDPLAN																	
	CE Dir	CE Dtrs	Gest Lgth	Birth Wt.	200 Wt.	400 Wt.	600 Wt.	MC Wt.	Milk	Scrotal	D to Calv	Carc Wt.	EMA	Rib Fat	Rump Fat	RBY%	IMF%
EBV	+0.3	+0.4	--	+4.7	+32	+57	+72	+59	+8	--	--	+41	+3.4	-0.3	+0.0	+0.7	+0.8
ACC	41%	36%		77%	69%	69%	66%	58%	47%			58%	47%	61%	62%	51%	48%

Traits Observed: BWT,200WT,400WT,FAT,EMA,IMF

Joining Details: Heifer calf at foot J265 born 30/4/13 by Kunuma F98. Re-joined to Raff Dynamite D345. PTIC.



Lot 20 IRELANDS QUIET G63



DOB: 02/05/2011

AMF NHFU CAF DDFU

C A FUTURE DIRECTION 5321
ARDROSSAN DIRECTION W109 (AI) (ET)
ARDROSSAN WILCOOLA Q71 (AI) (ET)

SIRE: NENZ181 KAROO W109 DIRECTION Z181

TE MANIA MODEST M126
KAROO FLATS MADONNA V56 (AI)
KAROO FLATS MADONNA T192

TE MANIA KELP K207 (AI)
HAZELDEAN RENAISSANCE R13 (AI)
HAZELDEAN P90 (AI)

DAM: VICC3 IRELANDS QUIET C3 (AI)

RITO 8E8 OF 5H11 TRAVELER
VICTOREE QUIET R114 (AI) (ET)
VICTOREE QUIET L42 (AI) (TW)

Notes: Another impressive Z181 daughter. Z181 needs no introduction and combined with the great Quiet family this cow has the pedigree to become a high performing angus matron. A great combination. A handy bull calf at foot.

Purchaser:..... \$:

September 2013 Angus Australia BREEDPLAN																	
	CE Dir	CE Dtrs	Gest Lgth	Birth Wt.	200 Wt.	400 Wt.	600 Wt.	MC Wt.	Milk	Scrotal	D to Calv	Carc Wt.	EMA	Rib Fat	Rump Fat	RBY%	IMF%
EBV	+2.2	+2.9	-3.0	+4.6	+37	+77	+96	+80	+14	+2.4	-3.9	+56	+5.7	+1.0	+0.9	+0.3	+1.1
ACC	54%	49%	60%	77%	70%	71%	68%	62%	57%	58%	46%	63%	57%	66%	67%	59%	57%

Traits Observed: BWT,200WT,400WT,FAT,EMA,IMF

Joining Details: Bull calf at foot J23 born 9/3/13 by Irelands Fletcher F1. Re-joined to Raff Dynamite D345. PTIC.



Lot 21 Irelands Wargoona H334



Lot 21 IRELANDS WARGOONA H334 (AI)(ET)



DOB: 16/08/2012

AMFU NHFU CAFU DDFU

BOOROOMOOKA UNDERTAKEN U170 (AI)

BOOROOMOOKA UNDERTAKEN Y145

BOOROOMOOKA UAAISE U101 (AI)

SIRE: NORE11 RENNYLEA EDMUND E11 (AI) (ET)

YTHANBRAE HENRY VIII U8 (AI) (ET)

LAWSONS HENRY VIII Y5 (AI)

YTHANBRAE DIRECTION T270 (AI)

VERMILION DATELINE 7078

VERMILION YELLOWSTONE

VERMILION B JESTRESS 3912

DAM: VTMZ31 TE MANIA WARGOONA Z31 (AI)

TE MANIA ROBIN HOOD R117

TE MANIA WARGOONA T285 (ACR)

TE MANIA WARGOONA P99 (AI)

Notes: Wow what an amazing heifer. She is a maternal sister to Fletcher F1 and has the makings of a true Angus Matron. I have no doubt she will become a donor cow where ever she goes. Our first E11 daughters have just calved and look great. An outstanding heifer.

Purchaser:..... \$:



September 2013 Angus Australia BREEDPLAN

	CE Dir	CE Dtrs	Gest Lgth	Birth Wt.	200 Wt.	400 Wt.	600 Wt.	MC Wt.	Milk	Scrotal	D to Calv	Carc Wt.	EMA	Rib Fat	Rump Fat	RBY%	IMF%
EBV	+3.0	+1.9	-6.2	+3.3	+46	+82	+104	+101	+15	+2.1	-5.5	+58	+4.0	+2.0	+2.0	-1.2	+3.3
ACC	49%	42%	62%	78%	67%	65%	63%	57%	47%	56%	39%	54%	48%	53%	53%	49%	

Traits Observed: BWT

Joining Details: Unjoined



Above: Lot 22 Irelands Rosebud H330



Lot 22 IRELANDS ROSEBUD H330 (AI)



DOB: 14/08/2012

AMFU NHFU CAFU DDFU

BOOROOMOOKA UNDERTAKEN Y145

RENNYLEA C277 (AI) (ET)

BOORHAMAN Y55 (AI)

SIRE: VICF1 IRELANDS FLETCHER F1

VERMILION YELLOWSTONE

TE MANIA WARGOONA Z31 (AI)

TE MANIA WARGOONA T285 (ACR)

G D A R TRAVELER 044

G A R GRID MAKER

G A R PRECISION 2536

DAM: VICB12 IRELANDS ROSEBUD B12 (AI) (ET)

PAPA EQUATOR 2928

IMRAN ROSEBUD U17 (AI) (ET)

SOUTH CROSS L11 (AI) (ET)

Notes: This is the first heifer tube offered for sale by Fletcher F1. She is a beautiful heifer. Her dam is a super breeding cow who is so consistent and this young heifer is no exception. Long, deep and easy doing from a super cow family. A potential donor cow.

Purchaser:..... \$:



September 2013 Angus Australia BREEDPLAN

	CE Dir	CE Dtrs	Gest Lgth	Birth Wt.	200 Wt.	400 Wt.	600 Wt.	MC Wt.	Milk	Scrotal	D to Calv	Carc Wt.	EMA	Rib Fat	Rump Fat	RBY%	IMF%
EBV	+0.3	+0.2	-5.2	+4.7	+50	+94	+116	--	+12	+2.3	-4.5	+67	+5.9	-0.3	-0.1	+0.8	+1.6
ACC	42%	36%	53%	77%	60%	59%	58%		40%								

Traits Observed: BWT

Joining Details: Unjoined



Above: Lot 23 Irelands Blackcap H337



Lot 23 IRELANDS BLACKCAP H337 (AI)(ET)



DOB: 15/08/2012

AMFU NHFU CAFU DDFU

BOOROOMOOKA UNDERTAKEN Y145

RENNYLEA C277 (AI) (ET)

BOORHAMAN Y55 (AI)

SIRE: VICF1 IRELANDS FLETCHER F1

VERMILION YELLOWSTONE

TE MANIA WARGOONA Z31 (AI)

TE MANIA WARGOONA T285 (ACR)

KAHARAU HERMES 653

SPRINGDALE HERCO 600 (ET)

SPRINGDALE 604 AB ET

DAM: VICC21 IRELANDS BLACKCAP C21 (AI) (ET)

HINGAIA 469 (AI)

VERMONT BLACKBIRD X179 (AI) (ET)

TIBOOBURRA BLACKBIRD R120

Notes: An impressive Fletcher F1 heifer from one of my favorite cows. Her dam we lost but were fortunate to have flushed her a couple of times, and can she breed. This young female will make a super cow. Potential donor cow.

Purchaser:..... \$:



September 2013 Angus Australia BREEDPLAN

	CE Dir	CE Dtrs	Gest Lgth	Birth Wt.	200 Wt.	400 Wt.	600 Wt.	MC Wt.	Milk	Scrotal	D to Calv	Carc Wt.	EMA	Rib Fat	Rump Fat	RBY%	IMF%
EBV	+0.5	--	-3.9	+5.4	+44	+82	+102	+100	+10	+1.8	-1.4	+55	+2.4	-0.1	-0.2	-0.2	+1.3
ACC	38%		51%	76%													

Traits Observed: BWT

Joining Details: Unjoined



Above: Lot 24 Irelands Blackcap H338



Lot 24 IRELANDS BLACKCAP H338 (AI)



DOB: 15/08/2012

AMFU NHFU CAFU DDFU

BOOROOMOOKA UNDERTAKEN Y145

RENNYLEA C277 (AI) (ET)

BOORHAMAN Y55 (AI)

SIRE: VICF1 IRELANDS FLETCHER F1

VERMILION YELLOWSTONE

TE MANIA WARGOONA Z31 (AI)

TE MANIA WARGOONA T285 (ACR)

KAHARAU HERMES 653

SPRINGDALE HERCO 600 (ET)

SPRINGDALE 604 AB ET

DAM: VICC21 IRELANDS BLACKCAP C21 (AI) (ET)

HINGAIA 469 (AI)

VERMONT BLACKBIRD X179 (AI) (ET)

TIBOOURRA BLACKBIRD R120

Notes: A sister to the previous lot. You can toss the coin to which one you like better. A beautiful deep bodied easy doing young heifer that will milk so well. This cow family is breeding so well for us and this heifer will continue the tradition. Potential donor cow.

Purchaser:..... \$:



September 2013 Angus Australia BREEDPLAN

	CE Dir	CE Dtrs	Gest Lgth	Birth Wt.	200 Wt.	400 Wt.	600 Wt.	MC Wt.	Milk	Scrotal	D to Calv	Carc Wt.	EMA	Rib Fat	Rump Fat	RBV%	IMF%
EBV	+0.2	--	-3.8	+5.6	+44	+82	+102	+100	+10	+1.8	-1.4	+55	+2.4	-0.1	-0.2	-0.2	+1.3
ACC	38%		51%	76%													

Traits Observed: BWT

Joining Details: Unjoined



Above: Lot 25 Irelands Dream H324



Lot 25 IRELANDS DREAM H324 (AI) (ET)



DOB: 12/08/2012

AMFU NHFU CAFU DDFU

WAITARA VALLEY BIG MAX
WAITARA VALLEY TEX
WAITARA VALLEY L578

SIRE: NZE469 HINGAIA 469 (AI)

BACK TRACK P&P ROYAL 28
HINGAIA 910
HINGAIA D208

HOFF GREAT WESTERN S C 456
TE MANIA TUFFNUT
TE MANIA ROWANDALE 191 AB

DAM: VONT34 BANQUET DREAM T34 (AI)

GARDENS FORTUNE 9213 S2
BANQUET DREAM Q104 (AI) (ET)
BANQUET KIWI DREAM (AI)

Notes: We purchased these embryos a few years ago with the aim of breeding some great daughters. Her sire needs no introduction to the Angus world. Her dam sold for a record \$27,500 and was National champion for Banquet. Potential donor.

Purchaser:..... \$:



September 2013 Angus Australia BREEDPLAN

	CE Dir	CE Dtrs	Gest Lgth	Birth Wt.	200 Wt.	400 Wt.	600 Wt.	MC Wt.	Milk	Scrotal	D to Calv	Carc Wt.	EMA	Rib Fat	Rump Fat	RBY%	IMF%
EBV	+0.6	+0.7	-3.7	+4.7	+34	+71	+90	+107	+10	+1.7	-2.5	+44	-0.4	-0.2	-0.6	-0.5	+0.3
ACC	57%	53%	59%	78%	67%	67%	67%	65%	61%	58%	54%	60%	56%	59%	60%	57%	55%

Traits Observed: BWT

Joining Details: Unjoined



Above: Lot 26 Irelands Vicky H361



Lot 26 IRELANDS VICKY H361 (AI) (ET)



DOB: 19/08/2012

AMFU NHFU CAFU DDFU

BOOROOMOOKA UNDERTAKEN U170 (AI)

BOOROOMOOKA UNDERTAKEN Y145

BOOROOMOOKA UAAISE U101 (AI)

SIRE: NORE11 RENNYLEA EDMUND E11 (AI) (ET)

YTHANBRAE HENRY VIII U8 (AI) (ET)

LAWSON'S HENRY VIII Y5 (AI)

YTHANBRAE DIRECTION T270 (AI)

VERMILION DATELINE 7078

VERMILION YELLOWSTONE

VERMILION B JESTRESS 3912

DAM: VICZ15 IRELANDS VICKY Z15 (AI) (ET)

TC STOCKMAN 2164

FERNLEIGH VICKY S103 (AI) (ET)

MERRIGRANGE VICKY H43+88 (AI) (ET)

Notes: An impressive E11 daughter out of my favorite cow. This young female has the potential in her pedigree to breed the house down. Her maternal sisters have sold to \$16,000 and brothers to \$20,000. A rare opportunity to secure such a heifer. Potential donor.

Purchaser:..... \$:



September 2013 Angus Australia BREEDPLAN

	CE Dir	CE Dtrs	Gest Lgth	Birth Wt.	200 Wt.	400 Wt.	600 Wt.	MC Wt.	Milk	Scrotal	D to Calv	Carc Wt.	EMA	Rib Fat	Rump Fat	RBY%	IMF%
EBV	+1.9	+0.8	-4.9	+3.5	+42	+77	+98	+89	+11	+2.1	-5.2	+54	+4.6	+2.1	+2.1	-1.2	+3.5
ACC	50%	43%	60%	78%	67%	66%	64%	57%	46%	57%	40%	56%	49%	55%	55%	50%	

Traits Observed: BWT

Joining Details: Unjoined



Above: Lot 27 Irelands Vicky H382



Lot 27 IRELANDS VICKY H382 (AI) (ET)



DOB: 24/08/2012

AMFU NHFU CAFU DDFU

CONNEALY TIMELINE

CONNEALY DANNY BOY

ENERGY OF CONANGA 4851

SIRE: QRFE108 RAFF EXPLOSIVE E108 (AI) (ET)

S V F BANDOLIER

HOFF BLACKBIRD 594 5217 (ET)

HOFF BOSS LADY S C 3V9

VERMILION DATELINE 7078

VERMILION YELLOWSTONE

VERMILION B JESTRESS 3912

DAM: VICZ15 IRELANDS VICKY Z15 (AI) (ET)

TC STOCKMAN 2164

FERNLEIGH VICKY S103 (AI) (ET)

MERRIGRANGE VICKY H43+88 (AI) (ET)

Notes: One of our first explosive daughter. He has been so successful in the Raff program with his top son sell to \$40,000 last year. Her dam again is one of our best breeders with over \$150,000 in progeny sold last year. Potential donor.

Purchaser:..... \$:



September 2013 Angus Australia BREEDPLAN

	CE Dir	CE Dtrs	Gest Lgth	Birth Wt.	200 Wt.	400 Wt.	600 Wt.	MC Wt.	Milk	Scrotal	D to Calv	Carc Wt.	EMA	Rib Fat	Rump Fat	RBY%	IMF%
EBV	+0.2	+0.8	-4.5	+4.5	+47	+91	+116	+105	+12	+3.0	--	+67	+6.6	+0.1	+0.0	+0.8	+1.1
ACC	45%	37%	56%	78%	66%	65%	64%	57%	43%	56%		54%	47%	52%	52%	47%	

Traits Observed: BWT

Joining Details: Unjoined



Above: lot 28 Irelands Wilcoola H335



Lot 28 IRELANDS WILCOOLA H335 (AI)



DOB: 14/08/2012

AMFU NHFU CAFU DDF

B/R NEW DESIGN 036
BON VIEW NEW DESIGN 1407
BON VIEW PRIDE 664

SIRE: VLYZ191 LAWSONS DINKY-DI Z191 (AI) (ET)

G A R PRECISION 1680
G A R PRECISION 1900 (ET)
G A R 6807 TRAVELER 534

TANGIHAU 150
IRELANDS YALE Y19 (AI) (ET)
LONESTAR POWER NIKKI (AI) (TW)

DAM: VICA19 IRELANDS WILCOOLA A19

S A F FOCUS OF E R
IRELANDS WILCOOLA Y12 (AI) (ET)
YURNGA WILCOOLA R10

Notes: We only used dinky Di a little and this heifer is a cracker. Her dam is an amazing cow who was sold to Four O Eight Angus last year as a donor. Her pedigree combines some of our best cow families. She will make into a great cow. Potential donor.

Purchaser:..... \$:

September 2013 Angus Australia MATING PREDICTOR

	CE Dir	CE Dtrs	Gest Lgth	Birth Wt.	200 Wt.	400 Wt.	600 Wt.	MC Wt.	Milk	Scrotal	D to Calv	Carc Wt.	EMA	Rib Fat	Rump Fat	RBY%	IMF%
EBV	+2.3	+1.2	--	+3.4	+38	+67	+89	+72	+13	--	-4.8	+48	+4.0	-0.4	-0.3	+0.4	+1.4

Expected average progeny values are provided to assist breeders estimate the outcome of particular mating combinations. **These values are NOT GROUP BREEDPLAN EBVs and should not be published as such.** The actual EBVs for any individual progeny resulting from a particular mating are likely to vary from the expected average values.

Joining Details: Unjoined

IRELANDS: OVER THE YEARS



Champion Led Bull, Lonestar Kernel K1 with his proud breeder and exhibitor Curry Ireland and Curry's father Graham (centre) receiving the National Country Life Trophy from Tony Leggett (Rural Press) for Champion Led Bull. Sadly Corey's father died just prior to the 1992 Melbourne Royal Show.



Winner of Te Mania Class 1, Lonestar Koughman K3 (40) (ET), receiving his winner's cash from Mrs Mary Gubbins, co-principal of Te Mania Angus, Colac, Vic, with breeder and exhibitor Curry Ireland at the halter.



Mrs Shirley Lyons, Glen Bold, Echunga, SA, congratulating the winner in the Glen Bold Class Corey Ireland, with his entry Lonestar Wrangler J2 (A). Wrangler J2 went on to be Reserve Champion Led Bull.



Back Track Girl 195



Corey on campaign

By LOUISE RADCLIFFE-SMITH

COREY Ireland is a lad with more enthusiasm and vision than most.

At 15, he has already won an array of coveted Angus ribbons at shows around Australia: Royal Melbourne and Adelaide senior champion Angus bull 1989, grand champion female in Canberra 1990, just to name a few.

Neither of his parents are farmers, having moved from Melbourne to a 9ha property outside Warragul 11 years ago. But they encouraged Corey and his brother

thing that was ours, run the things we want to run," Corey said. "Our main goal is to cater for the younger generation of today and tomorrow."

"We feel that, in time, the junior members of today will control the destiny of the Angus breed and the society," Corey believes breed youth societies could encourage kids to stay on farms.

He said the Angus society has overcome any initial doubts and is now fully supportive of JAG.

"It was just getting up the courage to get off our back-



prize-winning bull.



Mrs Judith Anderson, Niagara Angus, Queensland, NSW, presenting the Society's Tarnish Sash for Champion Led Bull to Lonestar Kernel K1, with Corey Ireland at the halter during his Presentation at breeding the champion.

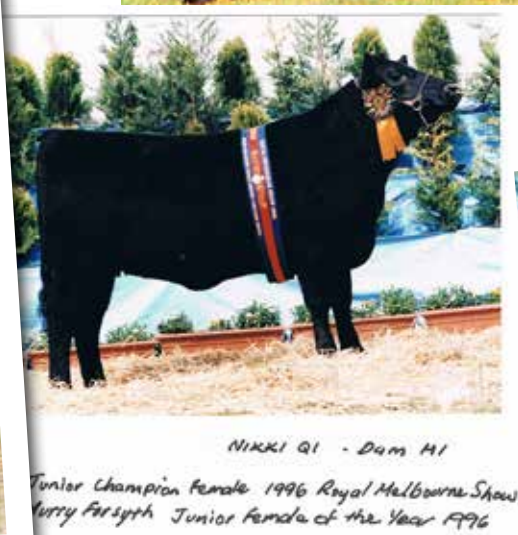


Champion Led Bull, Lonestar Kernel K1, born 4.1.89 to Keith Goodhouse (2) (40) (ET), from O'Hall's Tall Shave 2 (24) (7/6). Bred and exhibited by Corey and Michael Ireland, Sub. 1's. Kernel K1 was sold for \$6000 to Bantam's Enterprise, Birmingham, U.K.



ROYAL SHOWCASE
Celebrating 25 years of breeding at Sydney

Est 1984...



NIKKI Q1 - Dam M1

Junior Champion Female 1996 Royal Melbourne Show
Lorry Forsyth Junior Female of the Year 1996



NIKKI M1
Grand Champion Female, Adelaide and Brisbane Royal show
1995



3 X INTERBREED CHAMPIONS
Melbourne Royal Show 1996, 1998, 2000



... more recent times.

IRELANDS HAT TRICK
Irelands Angus top Royal Sydney Show
Angus Sale three years running



IRELAND'S ANGUS, ANGUS RECORD SET
A NEW Australian record of \$3050 was set for
joined commercial Angus females in the Riverina this week.



BLACK MAGIC
Irelands Angus top at \$43,000 and \$54,000
at consecutive sales in 2012.



THE LAND

No 4692 www.theland.com.au Thursday, March 28, 2013 \$3.60

IRELANDS' GALACTIC RECORD

Angus bull makes whopping \$117,500

p3

ISSN0023752-3 13046





Above: Lot 29 Irelands Nileation H432



Lot 29 IRELANDS NILEATION H432



DOB: 23/09/2012

AMFU NHFU CAFU DDF

PAPA POWER 096

PAPA EQUATOR 2928

PAPA ENVIOUS BLACKBIRD 8849

SIRE: QRFD345 RAFF DYNAMITE D345 (AI) (ET)

S V F BANDOLIER

HOFF BLACKBIRD 594 5217 (ET)

HOFF BOSS LADY S C 3V9

P A R B DESIGN PLUS 97

QUAMBY X119 (AI)

QUAMBY T226

DAM: DQUA31 QUAMBY A31


KYLOH KRACKER-JACK K4 (AI) (ET)

QUAMBY N126

QUAMBY NILEATION E51.

Notes: The first Dynamite daughter we have offered. Her sire is breeding so well for us. His progeny are so deep bodied, thick and easy doing yet have presence and style. This heifer is from a great old cow family who has stood the test of time. Potential donor cow.

Purchaser:..... \$:

	September 2013 Angus Australia MATING PREDICTOR																
	CE Dir	CE Dtrs	Gest Lgth	Birth Wt.	200 Wt.	400 Wt.	600 Wt.	MC Wt.	Milk	Scrotal	D to Calv	Carc Wt.	EMA	Rib Fat	Rump Fat	RBY%	IMF%
EBV	-0.1	--	--	+4.4	+42	+77	+93	--	+14	+1.1	-2.5	--	+3.5	-0.7	-0.6	+0.7	+0.8

Expected average progeny values are provided to assist breeders estimate the outcome of particular mating combinations. **These values are NOT GROUP BREEDPLAN EBVs and should not be published as such.** The actual EBVs for any individual progeny resulting from a particular mating are likely to vary from the expected average values.

Joining Details: Unjoined



Above: Lot 30 Irelands Eclypta H370



Lot 30 IRELANDS ECLYPTA H370 (AI)



DOB: 20/08/2012

AMFU NHFU CAFU DDFU

LEACHMAN RIGHT TIME

BT RIGHT TIME 24J

SITZ EVERELDA ENTENSE 1905

SIRE: VICE24 IRELANDS ERWIN E24 (AI) (ET)

SPRINGDALE HERCO 600 (ET)

IRELANDS ECLYPTA B14 (AI)

IRELANDS ECLYPTA Y17 (AI) (ET)

FERNLEIGH XERXES X89

IRELANDS BENTLEY B26 (AI)

YURNGA WILCOOLA R10

DAM: VICE2 IRELANDS ECLYPTA E2

ATLAS 941 OF TURIROA (ET)

IRELANDS ECLYPTA B8 (AI)

IRELANDS ECLYPTA Z8

Notes: One of my favorites. A true Eclypta. She is a real broody type of female who I know will breed well. Her sire is doing a great job for us with his first daughter in production and they look great. A strong Eclypta cross Eclypta combination. Potential donor.

Purchaser:..... \$:



September 2013 Angus Australia BREEDPLAN

	CE Dir	CE Dtrs	Gest Lgth	Birth Wt.	200 Wt.	400 Wt.	600 Wt.	MC Wt.	Milk	Scrotal	D to Calv	Carc Wt.	EMA	Rib Fat	Rump Fat	RBY%	IMF%
EBV	-1.5	--	--	+5.6	+44	+77	+94	--	--	--	--	--	--	--	--	--	--
ACC	37%			76%	60%	59%	57%										

Traits Observed: BWT

Joining Details: Unjoined



Above: Irelands Wargoona C52 (Granddam of Lot 31)



Lot 31 IRELANDS WARGOONA G130



DOB: 29/08/2011

AMF NHFU CAFU DDFU

TE MANIA UNLIMITED U3271 (AI) (ET)

TE MANIA INFINITY 04 379 AB

TE MANIA 95102

SIRE: VICE22 IRELANDS ECONOMIC E22 (AI) (ET)

VERMILION YELLOWSTONE

IRELANDS VICKY Z15 (AI) (ET)

FERNLEIGH VICKY S103 (AI) (ET)

BOOROOMOOKA UNDERTAKEN Y145

RENNYLEA C278 (AI) (ET)

BOORHAMAN Y55 (AI)

DAM: VICE204 IRELANDS WARGOONA E204

BLACK LABEL X15CONNECTION A15 (AI) (ET)

IRELANDS WARGOONA C52

TE MANIA WARGOONA Z31 (AI)

Notes: An impressive Wargoona female. We selected half our heifers to hold over to the Autumn to balance numbers and I think this heifer mated to Dynamite will breed the house down. She is so deep and easy doing just like this line. She combines both Wargoona and Vicky cows which have been our top producers.

Purchaser:..... \$:



September 2013 Angus Australia BREEDPLAN

	CE Dir	CE Dtrs	Gest Lgth	Birth Wt.	200 Wt.	400 Wt.	600 Wt.	MC Wt.	Milk	Scrotal	D to Calv	Carc Wt.	EMA	Rib Fat	Rump Fat	RBY%	IMF%
EBV	+0.2	--	--	+4.6	+44	+87	+105	+91	+13	+2.5	-4.4	+61	+4.7	+1.0	+1.0	-0.4	+2.3
ACC	38%			75%													

Traits Observed: BWT

Joining Details: AI'd to Raff Dynamite D345 3/8/2013. PTIC.



Lot 32 IRELANDS BELLE G87



DOB: 09/08/2011

AMFU NHFU CAF DDF

BANQUET XPLANATION X060 (AI) (ET)

BANQUET BUNDY B002 (AI) (ET)

BLACK GOLD CHAMPAGNE J031+89 (AI) (ET)

SIRE: VOND597 BANQUET DATELINE D597 (AI) (ET)

VERMILION DATELINE 7078

BANQUET DREAM Y105 (AI) (ET)

BANQUET KIWI DREAM (AI)

P A R B DESIGN PLUS 97

QUAMBY X119 (AI)

QUAMBY T226

DAM: DQUB14 QUAMBY B14

NUAGE HOT STUFF+88 (AI) (ET)

QUAMBY FRANCIS M30

QUAMBY FRANCIS H46+88

Notes: The first of our D597 daughters offered. Her sire has just done a great job for us. His sons have sold to \$10,000 and have just been so consistent. His first daughters are in production and do they look good. Her dam is an awesome cow with real power and grunt yet soft and easy doing.

Purchaser:..... \$:



September 2013 Angus Australia BREEDPLAN

	CE Dir	CE Dtrs	Gest Lgth	Birth Wt.	200 Wt.	400 Wt.	600 Wt.	MC Wt.	Milk	Scrotal	D to Calv	Carc Wt.	EMA	Rib Fat	Rump Fat	RBY%	IMF%
EBV	+0.8	--	--	+4.0	+29	+58	+72	--	--	--	--	--	--	--	--	--	--
ACC	37%			76%	60%	59%	57%										

Traits Observed: BWT

Joining Details: AI'd to Raff Dynamite D345 3/8/2013. PTIC.



Lot 33 IRELANDS DELL G163



DOB: 21/09/2011

AMFU NHFU CAFU DDF

BANQUET XPLANATION X060 (AI) (ET)

BANQUET BUNDY B002 (AI) (ET)

BLACK GOLD CHAMPAGNE J031+89 (AI) (ET)

SIRE: VOND597 BANQUET DATELINE D597 (AI) (ET)

VERMILION DATELINE 7078

BANQUET DREAM Y105 (AI) (ET)

BANQUET KIWI DREAM (AI)

V D A R NEW TREND 315

QUAMBY LOHAVEN NEW T P2 (AI)

QUAMBY NILEATION M102

DAM: DQUB44 QUAMBY B44

KYLOH NEMESIS 9L N13

QUAMBY T221

QUAMBY LUCINDA L59

Notes: Another D597 daughter. I cant fault them so far, they are so consistently sound, easy doing yet have the power and presence you love. He has worked so well over the Quamby cows providing true maternal attributes we need in the breed.

Purchaser:..... \$:



September 2013 Angus Australia BREEDPLAN

	CE Dir	CE Dtrs	Gest Lgth	Birth Wt.	200 Wt.	400 Wt.	600 Wt.	MC Wt.	Milk	Scrotal	D to Calv	Carc Wt.	EMA	Rib Fat	Rump Fat	RBY%	IMF%
EBV	+0.1	--	--	+5.1	+31	+61	+76	--	--	--	--	--	--	--	--	--	--
ACC	37%			76%	60%	58%	57%										

Traits Observed: BWT

Joining Details: AI'd to Atahua Freedom 609 3/8/13. PTIC.



Lot 34 IRELANDS FOREVER G166



DOB: 22/09/2011

AMFU NHFU NHFU DDF

BANQUET XPLANATION X060 (AI) (ET)
 BANQUET BUNDY B002 (AI) (ET)
 BLACK GOLD CHAMPAGNE J031+89 (AI) (ET)
SIRE: VOND597 BANQUET DATELINE D597 (AI) (ET)
 VERMILION DATELINE 7078
 BANQUET DREAM Y105 (AI) (ET)
 BANQUET KIWI DREAM (AI)

V D A R NEW TREND 315
 QUAMBY LOHAVEN NEW T P2 (AI)
 QUAMBY NILEATION M102

DAM: DQUB16 QUAMBY B16

KYLOH KRACKER-JACK K4 (AI) (ET)
 QUAMBY LOHAVEN P55
 QUAMBY J87+89

Notes: The combination of the Dream and champagne families influenced us to purchase D597 and wow I glad we did, you can really see the importance of strong maternal pedigrees. This heifers dam is magnificent, soft skin deep body and so sound. A top young cow in the making.

Purchaser:..... \$:



September 2013 Angus Australia BREEDPLAN

	CE Dir	CE Dtrs	Gest Lgth	Birth Wt.	200 Wt.	400 Wt.	600 Wt.	MC Wt.	Milk	Scrotal	D to Calv	Carc Wt.	EMA	Rib Fat	Rump Fat	RBY%	IMF%
EBV	+0.0	--	--	+5.5	+32	+64	+80	--	+10	--	-2.3	--	+1.8	-0.4	-0.6	+0.2	+1.0
ACC	37%			76%	60%	59%	57%										

Traits Observed: BWT

Joining Details: AI'd to Atahua Freedom 609 3/8/13. PTIC.



Lot 35 IRELANDS WATTLE G167 (APR)



DOB: 22/09/2011

AMFU NHFU CAFU DDF

LEACHMAN RIGHT TIME
 BT RIGHT TIME 24J
 SITZ EVERELDA ENTENSE 1905
SIRE: VICE24 IRELANDS ERWIN E24 (AI) (ET)
 SPRINGDALE HERCO 600 (ET)
 IRELANDS ECLYPTA B14 (AI)
 IRELANDS ECLYPTA Y17 (AI) (ET)

G A R YIELD GRADE
 LAWSONS YIELD GRADE Z1338 (AI)
 LAWSONS PAYLOAD X421 (AI) (ET)

DAM: VICE36 IRELANDS WATTLE E36 (APR)

WATTLETOP VICTORIA CROSS V100 (AI) (ET)
 QUAMBY X33 (APR)
 WATTLETOP K43K (APR) (AI)

Notes: A long, deep bodied heifer by Erwin E24. What genetic power here, look at lot 5 Erwin's flush sister and add it to this young females dam and it just screams quality. Softness, soundness and fertility with longevity built into the maternal pedigree. A good combination.

Purchaser:..... \$:



September 2013 Angus Australia BREEDPLAN

	CE Dir	CE Dtrs	Gest Lgth	Birth Wt.	200 Wt.	400 Wt.	600 Wt.	MC Wt.	Milk	Scrotal	D to Calv	Carc Wt.	EMA	Rib Fat	Rump Fat	RBY%	IMF%
EBV	-0.9	--	--	+5.1	+41	+75	+94	--	+14	--	--	+55	+4.0	+0.4	+0.5	+0.2	+1.1
ACC	37%			75%	60%	60%	57%										

Traits Observed: BWT

Joining Details: AI'd to Raff Dynamite D345 3/8/2013. PTIC.



Lot 36 IRELANDS PRINCESS G126



DOB: 29/08/2011

AMFU NHFU CAF DDF

VERMILION DATELINE 7078

J & C APPEAL A10 (AI)

J & C MISS CHEYENNE W3 (AI) (ET)

SIRE: QRFE96 RAFF SYNERGY E96

BR MIDLAND

RAFF DORIS Z199 (AI) (ET)

RAFF DORIS W10

TE MANIA MODEST M126

ARDROSSAN MODEST W107 (AI)

ARDROSSAN PRINCESS U101 (AI) (ET)

DAM: VICD8 IRELANDS PRINCESS D8 (AI) (ET)

B/R NEW DESIGN 323

VICTOREE T8 (AI)

VICTOREE PRINCESS Q111 (AI) (ET)

Purchaser:..... \$:

	September 2013 Angus Australia BREEDPLAN																
	CE Dir	CE Dtrs	Gest Lgth	Birth Wt.	200 Wt.	400 Wt.	600 Wt.	MC Wt.	Milk	Scrotal	D to Calv	Carc Wt.	EMA	Rib Fat	Rump Fat	RBY%	IMF%
EBV	-1.6	--	--	+5.9	+47	+84	+108	--	+12	+2.6	--	+60	+3.3	-1.1	-0.8	+0.7	+0.9
ACC	38%			76%	61%	61%	59%		40%	51%							

Traits Observed: BWT

Joining Details: AI'd to Raff Dynamite D345 3/8/2013. PTIC.



Above: Irelands Firstlady G174, Sired by raff Synergy E96 (Sold \$7000 to Pickles Angus) at Sydney Royal Show 2013.



Lot 37 IRELANDS PRINCESS G168



DOB: 25/09/2011

AMF NHFU CAFU DDF

TE MANIA UNLIMITED U3271 (AI) (ET)
TE MANIA INFINITY 04 379 AB
TE MANIA 95102

SIRE: VICE22 IRELANDS ECONOMIC E22 (AI) (ET)

VERMILION YELLOWSTONE
IRELANDS VICKY Z15 (AI) (ET)
FERNLEIGH VICKY S103 (AI) (ET)

BOOROOMOOKA UNDERTAKEN Y145
RENNYLEA C278 (AI) (ET)
BOORHAMAN Y55 (AI)

DAM: VICE91 IRELANDS PRINCESS E91

MERRIC RIVERS NEW DESIGN T149 (AI)
VICTOREE PRINCESS A26
VICTOREE PRINCESS S16 (TW)

Notes: A rock solid Economic E22 daughter. His sons sold to \$9,000 in the Autumn with his first daughters now in production, you can really see the importance of having strong maternal genetics. This heifers dam, grand dam are still in production and are breeding well.

Purchaser:..... \$:



September 2013 Angus Australia BREEDPLAN

	CE Dir	CE Dtrs	Gest Lgth	Birth Wt.	200 Wt.	400 Wt.	600 Wt.	MC Wt.	Milk	Scrotal	D to Calv	Carc Wt.	EMA	Rib Fat	Rump Fat	RBY%	IMF%
EBV	+0.7	-1.1	-4.5	+3.8	+40	+84	+99	+82	+11	+2.6	-4.4	+58	+4.6	+1.1	+1.0	-0.4	+2.5
ACC	39%	35%		74%													

Traits Observed: BWT

Joining Details: AI'd to Raff Dynamite D345 3/8/2013. PTIC.



Lot 38 IRELANDS NOLA G135



DOB: 31/08/2011

AMF NHFU CAFU DDF

VERMILION DATELINE 7078
J & C APPEAL A10 (AI)
J & C MISS CHEYENNE W3 (AI) (ET)

SIRE: QRFE96 RAFF SYNERGY E96

BR MIDLAND
RAFF DORIS Z199 (AI) (ET)
RAFF DORIS W10

MERRIC RIVERS NEW DESIGN T149 (AI)
WEEMALAH NEW DESIGN X10 (AI)
WEEMALA ENID N13

DAM: VSCZ104 WEEMALAH NOLA Z104

WEEMALAH KING N63
WEEMALAH NOLA X137
WEEMALAH NOLA T14 (AI) (ET)

Notes: A beautiful heifer. By the great Synergy E96 from an amazing old cow. This is an example of where breedplan just dose not add up. Her dam is all you would want in a great Angus cow and always breeds consistently yet it is not recognised on paper, I will stick with the cow who breeds and is profitable year in year out.

Purchaser:..... \$:



September 2013 Angus Australia BREEDPLAN

	CE Dir	CE Dtrs	Gest Lgth	Birth Wt.	200 Wt.	400 Wt.	600 Wt.	MC Wt.	Milk	Scrotal	D to Calv	Carc Wt.	EMA	Rib Fat	Rump Fat	RBY%	IMF%
EBV	--	--	--	+4.5	+36	+68	+89	--	+11	+1.5	-3.3	+48	+2.8	-1.0	-0.6	+0.7	+0.4
ACC				75%	61%	59%	58%		41%								

Traits Observed: BWT

Joining Details: AI'd to Raff Dynamite D345 3/8/2013. PTIC.



Above: Lot 39 Irelands Rosebud G169 with calf at foot



Lot 39 IRELANDS ROSEBUD G169



DOB: 02/10/2011

AMFU NHFU CAFU DDF

BANQUET XPLANATION X060 (AI) (ET)

BANQUET BUNDY B002 (AI) (ET)

BLACK GOLD CHAMPAGNE J031+89 (AI) (ET)

SIRE: VOND597 BANQUET DATELINE D597 (AI) (ET)

VERMILION DATELINE 7078

BANQUET DREAM Y105 (AI) (ET)

BANQUET KIWI DREAM (AI)

G D A R TRAVELER 044

G A R GRID MAKER

G A R PRECISION 2536

DAM: VICB16 IRELANDS ROSEBUD B16 (AI) (ET)

PAPA EQUATOR 2928

IMRAN ROSEBUD U17 (AI) (ET)

SOUTH CROSS L11 (AI) (ET)

Notes: What a star! This young female is outstanding in my eyes and I am not sure why we are selling her. She has just calved and looks amazing. She is the perfect wedge shaped female you dream of with an amazing bag of milk and softness. Her pedigree speaks for its self and you can understand her real quality. She is a donor cow for sure.

Purchaser:..... \$:



September 2013 Angus Australia BREEDPLAN

	CE Dir	CE Dtrs	Gest Lgth	Birth Wt.	200 Wt.	400 Wt.	600 Wt.	MC Wt.	Milk	Scrotal	D to Calv	Carc Wt.	EMA	Rib Fat	Rump Fat	RBY%	IMF%
EBV	+0.2	+0.1	-2.8	+4.5	+43	+81	+102	--	+8	+2.4	-3.3	+60	+5.0	-2.0	-1.8	+1.4	+1.0
ACC	43%	38%		75%	62%	62%	59%		44%	54%		51%	46%	50%	51%	46%	

Traits Observed: BWT

Joining Details: Heifer calf at foot J375 born 21/9/13 by Irelands Geeman G57.



Lot 40 IRELANDS NIKKI G136



DOB: 02/09/2011

AMFU NHFU CAFU DDFU

VERMILION DATELINE 7078

J & C APPEAL A10 (AI)

J & C MISS CHEYENNE W3 (AI) (ET)

SIRE: QRFE96 RAFF SYNERGY E96

BR MIDLAND

RAFF DORIS Z199 (AI) (ET)

RAFF DORIS W10

WAITAPU DIPLOMAT 51

TANGIHAU 150

TANGIHAU 47

DAM: VICD109 IRELANDS NIKKI D109 (AI) (ET)

ATAHUA WESTPOINT AB

LONESTAR NIKKI U5 (AI)

LONESTAR NIKKI R7 (AI)

Notes: A great young female with her life ahead of her. This young cow is from the heart of our program. Her dam is one of my favorite Nikki daughter who has amazing capacity and volume with real grunt and great head and jaw. This is a star in the making I think.

Purchaser:..... \$:



September 2013 Angus Australia BREEDPLAN

	CE Dir	CE Dtrs	Gest Lgth	Birth Wt.	200 Wt.	400 Wt.	600 Wt.	MC Wt.	Milk	Scrotal	D to Calv	Carc Wt.	EMA	Rib Fat	Rump Fat	RBY%	IMF%
EBV	-0.7	--	-4.0	+5.7	+42	+76	+103	--	+8	+2.1	-1.9	+55	+1.9	-1.7	-1.7	+0.8	--
ACC	39%			76%	60%	59%	58%		40%	50%							

Traits Observed: BWT

Joining Details: PTIC to Irelands Geeman G57. To calve prior to sale.



Above: Lonestar Nikki R7, Grand dam of Lot 41



Lot 41 IRELANDS ELLA D10 (AI) (ET)



DOB: 29/03/2008

AMFU NHFU CAFU DDFU

WAIHOHONU 113
KAHARAU LAIMBEER 438
KAHARAU 5270

SIRE: NZE0122 BURKE 22 OF TURIROA

RANGATIRA EMBLEM 911
FLOSS OF TURIROA
WISDOM OF TURIROA

COBBLE POND NEW YORKER
SARATOGA QUEBEC (IMP CAN) (AI)
PROSPECT ZARA 24S

DAM: VWKJ7+89 KYLOH ELLA J7+89 (AI) (ET)

BACK TRACK DAY BREAKER 194
KYLOH ELLA E14. (AI) (ET)
BACK TRACK 202

Notes: If you want a cow who can breed year in year out then this is her. She may not have the best numbers but can she breed. Her dam was the best cow ever bred at Kyloh and her production record was Extraordinary. We were fortunate enough to flush her successfully before she died and have some amazing daughters now in our herd. A real breeding cow.

Purchaser:..... \$:



September 2013 Angus Australia BREEDPLAN

	CE Dir	CE Dtrs	Gest Lgth	Birth Wt.	200 Wt.	400 Wt.	600 Wt.	MC Wt.	Milk	Scrotal	D to Calv	Carc Wt.	EMA	Rib Fat	Rump Fat	RBY%	IMF%
EBV	-2.4	+0.5	-0.3	+6.2	+30	+60	+74	+82	+11	+1.6	+2.0	+31	-1.3	+0.7	+0.6	-1.3	+0.7
ACC	54%	45%	61%	80%	71%	73%	71%	64%	62%	58%	44%	63%	54%	65%	65%	56%	54%

Traits Observed: BWT,400WT,FAT,EMA,IMF

Joining Details: Bull Calf at foot J347 born 28/8/13 by Irelands Gapsted G25.



Above: Kylah Ella J7, Dam of Lot 41



Lot 42 IRELANDS LORETTA E102



DOB: 12/11/2009

AMF NHFU CAFU DDF

BOOROOMOOKA UNDERTAKEN U170 (AI)

BOOROOMOOKA UNDERTAKEN Y145

BOOROOMOOKA UAAISE U101 (AI)

SIRE: NORC278 RENNYLEA C278 (AI) (ET)

TE MANIA MODEST M126

BOORHAMAN Y55 (AI)

BOORHAMAN W1 (AI)

TE MANIA UNLIMITED U3271 (AI) (ET)

TE MANIA YOU RIPPER Y692 (AI)

TE MANIA MOONGARA U549 (AI) (ET)

DAM: VICB124 IRELANDS LORETTA B124

BOOROOMOOKA TIM T204 (AI)

VICTOREE LORETTA W26

VICTOREE LORETTA Q24

Purchaser:..... \$:

Notes: What a complete easy care Angus cow. Her dam is from the great old Victoree Loretta family who are just great breeders. Harry Williams visited a month before he sadly passed away and left me with some advice always have this cow line in your herd and they will not let you down. She is no exception.

	September 2013 Angus Australia BREEDPLAN																
	CE Dir	CE Dtrs	Gest Lgth	Birth Wt.	200 Wt.	400 Wt.	600 Wt.	MC Wt.	Milk	Scrotal	D to Calv	Carc Wt.	EMA	Rib Fat	Rump Fat	RBY%	IMF%
EBV	+1.5	-1.3	--	+3.2	+32	+71	+90	+79	+10	--	-4.5	+50	+3.2	+0.5	+0.7	-0.5	+2.2
ACC	43%	37%		75%	65%	69%	65%	56%	43%		35%	57%	48%	61%	62%	52%	49%

Traits Observed: BWT,400WT,FAT,EMA,IMF

Joining Details: Bull and Heifer (Twins) calf at foot J343 & J344 born 26/8/13 by Irelands Galaxy G43.



Lot 43 IRELANDS LORETTA G117



DOB: 22/08/2011

AMFU NHFU CAFU DDF

TE MANIA UNLIMITED U3271 (AI) (ET)

TE MANIA INFINITY 04 379 AB

TE MANIA 95102

SIRE: VICE22 IRELANDS ECONOMIC E22 (AI) (ET)

VERMILION YELLOWSTONE

IRELANDS VICKY Z15 (AI) (ET)

FERNLEIGH VICKY S103 (AI) (ET)

BOOROOMOOKA UNDERTAKEN Y145

RENNYLEA C278 (AI) (ET)

BOORHAMAN Y55 (AI)

DAM: VICE102 IRELANDS LORETTA E102

TE MANIA YOU RIPPER Y692 (AI)

IRELANDS LORETTA B124

VICTOREE LORETTA W26

Purchaser:..... \$:

Notes: A beautiful young cow who has just calved. She has a perfect udder and just looks amazing. Her dam is lot 42 and you can see where she gets her quality from and her ability to breed from. E22 is just breeding so well for us. A great young cow.

	September 2013 Angus Australia BREEDPLAN																
	CE Dir	CE Dtrs	Gest Lgth	Birth Wt.	200 Wt.	400 Wt.	600 Wt.	MC Wt.	Milk	Scrotal	D to Calv	Carc Wt.	EMA	Rib Fat	Rump Fat	RBY%	IMF%
EBV	-0.1	--	--	+4.2	+39	+81	+100	+90	+10	--	-4.4	+58	+4.7	+0.7	+0.7	-0.2	+2.3
ACC	38%			75%													

Traits Observed: BWT

Joining Details: Bull calf at foot J376 born 21/9/13 by Irelands Geeman G57.



Above: Lot 44 Irelands Eventune E105



Lot 44 IRELANDS EVENTUNE E105



DOB: 15/11/2009

AMFU NHF CAFU DDF

BOORROOMOOKA UNDERTAKEN U170 (AI)

BOORROOMOOKA UNDERTAKEN Y145

BOORROOMOOKA UAAISE U101 (AI)

SIRE: NORC278 RENNYLEA C278 (AI) (ET)

TE MANIA MODEST M126

BOORHAMAN Y55 (AI)

BOORHAMAN W1 (AI)

BON VIEW NEW DESIGN 1407

G A R INTEGRITY

G A R PRECISION 1019

DAM: QRVA113 RIPPLE VALE EVENTUNE A113 (AI)

F NICHOLS HALLMARK R225

RIPPLE VALE EVENTUNE K94 (AI)

RIPPLE VALE EVENTUNE F15. (AI)

Notes: A very impressive young cow. Again from one of those cow families Harry told me never to let go of as they will always deliver consistent results. This cow has an amazing heifers calf at foot not to be missed. Production Production Production.

Purchaser:..... \$:



September 2013 Angus Australia BREEDPLAN

	CE Dir	CE Dtrs	Gest Lgth	Birth Wt.	200 Wt.	400 Wt.	600 Wt.	MC Wt.	Milk	Scrotal	D to Calv	Carc Wt.	EMA	Rib Fat	Rump Fat	RBY%	IMF%
EBV	+3.0	+0.5	-3.9	+2.7	+28	+62	+72	+57	+6	+2.0	-4.0	+39	+3.0	+1.2	+1.5	-0.6	+1.6
ACC	44%	38%	52%	78%	66%	71%	66%	57%	45%	56%	37%	59%	51%	62%	63%	53%	50%

Traits Observed: BWT,400WT,FAT,EMA,IMF

Joining Details: Heifer calf at foot J359 born 6/9/13 by Raff Synergy E96.



Lot 45 IRELANDS PRINCESS E91



DOB: 02/11/2009

AMF NHFU CAFU DDF

BOOROOMOOKA UNDERTAKEN U170 (AI)

BOOROOMOOKA UNDERTAKEN Y145

BOOROOMOOKA UAAISE U101 (AI)

SIRE: NORC278 RENNYLEA C278 (AI) (ET)

TE MANIA MODEST M126

BOORHAMAN Y55 (AI)

BOORHAMAN W1 (AI)

B/R NEW DESIGN 036

MERRIC RIVERS NEW DESIGN T149 (AI)

MERRIC RIVERS Q4 (AI) (ET)

DAM: VVWA26 VICTOREE PRINCESS A26

VICTOREE PEMBERTON (AI)

VICTOREE PRINCESS S16 (TW)

VICTOREE PRINCESS N7 (AI)

Notes: One of my favorite cows. I just love this young cow and her ability to breed consistently is amazing. Her dam is a great cow who is just so consistent in her breeding. I was fortunate to have broken the original Princess F32 in and she was just an amazing cow who would hold her ground still today. Real strength here. A great heifer calf at foot.

Purchaser:..... \$:



September 2013 Angus Australia BREEDPLAN

	CE Dir	CE Dtrs	Gest Lgth	Birth Wt.	200 Wt.	400 Wt.	600 Wt.	MC Wt.	Milk	Scrotal	D to Calv	Carc Wt.	EMA	Rib Fat	Rump Fat	RBY%	IMF%
EBV	+3.0	-0.1	-5.2	+2.5	+34	+76	+87	+64	+12	+2.9	-4.6	+49	+3.1	+1.4	+1.4	-0.9	+2.7
ACC	46%	40%	50%	78%	67%	70%	66%	58%	46%	51%	40%	58%	50%	62%	63%	54%	51%

Traits Observed: BWT,400WT,FAT,EMA,IMF

Joining Details: Heifer calf at foot J354 born 1/9/13 by Raff Synergy E96.



Lot 46 IRELANDS POWERLADY E90



DOB: 02/11/2009

AMFU NHFU CAFU DDF

BOOROOMOOKA UNDERTAKEN U170 (AI)

BOOROOMOOKA UNDERTAKEN Y145

BOOROOMOOKA UAAISE U101 (AI)

SIRE: NORC278 RENNYLEA C278 (AI) (ET)

TE MANIA MODEST M126

BOORHAMAN Y55 (AI)

BOORHAMAN W1 (AI)

MERRIC RIVERS NEW DESIGN T149 (AI)

CLAMON X150 (AI)

CLAMON V156 (AI)

DAM: VVWA41 VICTOREE A41

VICTOREE TREMENDOUS T2 (AI)

VICTOREE EMERELDA V47

LANDFALL POWERLADY K153 (AI) (ET) (TW)

Notes: Spend a moment to study the pedigree here. This cow is from the heart of the Landfall herd and can she breed. We have retained daughters in our herd and will continue to do so as they are just rock solid. She has a beautiful heifer calf at foot that should not be missed.

Purchaser:..... \$:



September 2013 Angus Australia BREEDPLAN

	CE Dir	CE Dtrs	Gest Lgth	Birth Wt.	200 Wt.	400 Wt.	600 Wt.	MC Wt.	Milk	Scrotal	D to Calv	Carc Wt.	EMA	Rib Fat	Rump Fat	RBY%	IMF%
EBV	+2.3	-0.5	--	+3.1	+33	+75	+85	+67	+12	--	--	+49	+4.2	+1.2	+1.1	-0.4	+2.6
ACC	42%	35%		78%	66%	69%	65%	56%	41%			56%	47%	60%	62%	51%	48%

Traits Observed: BWT,400WT,FAT,EMA,IMF

Joining Details: Heifer calf at foot J363 born 12/9/13 by Raff Synergy E96.



Lot 47 IRELANDS ECLYPTA F53



DOB: 13/10/2010

AMF NHF CAFU DDF

BON VIEW NEW DESIGN 1407
WOODGREEN GUARDSMAN Z7 (AI)
WOODGREEN CHAMPAGNE U7 (AI) (ET)

SIRE: VICC8 IRELANDS COOLABAR C8

IRELANDS YALE Y19 (AI) (ET)
IRELANDS ECLYPTA A27
IRELANDS ECLYPTA Y17 (AI) (ET)

G A R PRECISION 1680
C A FUTURE DIRECTION 5321
C A MISS POWER FIX 308

DAM: VICD108 IRELANDS ECLYPTA D108 (AI) (ET)

ATAHUA WESTPOINT AB
LONESTAR ECLYPTA S5 (AI)
KYLOH M032 ECLYPTA P27 (AI) (ET)

Notes: What a strong pedigree here. A double cross of the Eclypta family with a bit of Champagne and nikki thrown in. This young cows ability to breed is outstanding so don't be put off by her not having trendy genetics but just reliable rock solid instead.

Purchaser:..... \$:



September 2013 Angus Australia BREEDPLAN

	CE Dir	CE Dtrs	Gest Lgth	Birth Wt.	200 Wt.	400 Wt.	600 Wt.	MC Wt.	Milk	Scrotal	D to Calv	Carc Wt.	EMA	Rib Fat	Rump Fat	RBY%	IMF%
EBV	+0.1	--	--	+4.4	+33	+60	+79	--	+10	--	--	+43	+3.5	-0.4	0.0	+0.3	+1.0
ACC	36%			66%													

Traits Observed: BWT

Joining Details: PTIC to Raff Synergy E96, to calve prior to sale.



Ben Simpson

Above: Irelands Eclypta E82 (Sold \$6000 to Grant Oldfield) Sydney Royal Show 2011.



Lot 48 IRELANDS LOWAN E101



DOB: 12/09/2009

AMFU NHFU CAFU DDF

BOOROOMOOKA UNDERTAKEN U170 (AI)

BOOROOMOOKA UNDERTAKEN Y145

BOOROOMOOKA UAAISE U101 (AI)

SIRE: NORC278 RENNYLEA C278 (AI) (ET)

TE MANIA MODEST M126

BOORHAMAN Y55 (AI)

BOORHAMAN W1 (AI)

TE MANIA UNLIMITED U3271 (AI) (ET)

TE MANIA YOU RIPPER Y692 (AI)

TE MANIA MOONGARA U549 (AI) (ET)

DAM: VICB107 IRELANDS LOWAN B107

SUMMITCREST SCOTCH CAP OB45

WALLAROY LOWAN Y305 (AI) (ET)

WALLAROY LOWAN U43 (AI)

Notes: This impressive young female is well worth consideration. This family has been so successful for us with sons selling to \$11,000 and a great line of daughters retained. This young cow has a very impressive Galaxy bull calf at foot and should not be missed.

Purchaser:..... \$:



September 2013 Angus Australia BREEDPLAN

	CE Dir	CE Dtrs	Gest Lgth	Birth Wt.	200 Wt.	400 Wt.	600 Wt.	MC Wt.	Milk	Scrotal	D to Calv	Carc Wt.	EMA	Rib Fat	Rump Fat	RBY%	IMF%
EBV	+2.1	-1.1	--	+2.9	+33	+73	+90	+76	+9	+2.7	-4.9	+49	+3.6	+1.7	+1.9	-1.1	+2.6
ACC	45%	38%		69%	63%	67%	63%	55%	43%	57%	36%	57%	51%	61%	62%	53%	50%

Traits Observed: BWT,400WT,FAT,EMA,IMF

Joining Details: Bull Calf at foot J345 born 27/8/13 by Irelands Galaxy G43.



Lot 49 IRELANDS WATTLE G131 (APR)



DOB: 30/08/2011

AMFU NHFU CAFU DDF

LEACHMAN RIGHT TIME

BT RIGHT TIME 24J

SITZ EVERELDA ENTENSE 1905

SIRE: VICE24 IRELANDS ERWIN E24 (AI) (ET)

SPRINGDALE HERCO 600 (ET)

IRELANDS ECLYPTA B14 (AI)

IRELANDS ECLYPTA Y17 (AI) (ET)

G A R YIELD GRADE

LAWSON'S YIELD GRADE Z1338 (AI)

LAWSON'S PAYLOAD X421 (AI) (ET)

DAM: DQUE41 QUAMBY E41 (APR)

QUAMBY LOHAVEN NEW T P2 (AI)

QUAMBY B51 (APR)

QUAMBY X33 (APR)

Notes: A soft easy doing daughter of Erwin E24. Her dam is a magnificent young cow who is breeding so well. This cow family has longevity written all over it with her dam, grand dam and great grand dam still in production in our herd today.

Purchaser:..... \$:



September 2013 Angus Australia BREEDPLAN

	CE Dir	CE Dtrs	Gest Lgth	Birth Wt.	200 Wt.	400 Wt.	600 Wt.	MC Wt.	Milk	Scrotal	D to Calv	Carc Wt.	EMA	Rib Fat	Rump Fat	RBY%	IMF%
EBV	-0.9	--	--	+5.3	+41	+77	+96	--	--	--	--	--	--	--	--	--	--
ACC	36%			76%													

Traits Observed: BWT

Joining Details: Bull calf at foot J367 born 15/9/13 by Irelands Geeman G57.



Above: Lot 50 Irelands Eclypa G128



Lot 50 IRELANDS ECLYPTA G128 (AI)



DOB: 29/08/2011

AMFU NHFU CAFU DDF

B/R NEW DESIGN 036
TE MANIA UNLIMITED U3271 (AI) (ET)
TE MANIA LOWAN R426 (AI) (ET)

SIRE: NZE15009004444 WOODBANK 444 AB

BRACKENFIELD RADAR
WOODBANK 94
WOODBANK 758

BOOROOMOOKA USA U13 (AI)
BOOROOMOOKA WONBRI W319
BOOROOMOOKA TRACY T4 (AI) (ET)

DAM: VICC31 IRELANDS ECLYPTA C31

B C C BUSHWACKER 41-93
IRELANDS ECLYPTA Y17 (AI) (ET)
YURNGA ECLYPTA L1 (AI) (ET)

Notes: Wow an impressive young female. A rock solid Eclypa female who has her life ahead of her. Her sire is doing a great job for us they are soft easy doing cattle who are just so sound and fertile. This young female is no exception. She has real growth and presence.

Purchaser:..... \$:

	September 2013 Angus Australia BREEDPLAN																
	CE Dir	CE Dtrs	Gest Lgth	Birth Wt.	200 Wt.	400 Wt.	600 Wt.	MC Wt.	Milk	Scrotal	D to Calv	Carc Wt.	EMA	Rib Fat	Rump Fat	RBY%	IMF%
EBV	+1.2	+1.0	-2.5	+2.8	+32	+55	+69	+60	+10	+1.6	--	+41	+3.9	+1.1	+1.6	-0.1	--
ACC	44%	37%	53%	77%	65%	64%	63%	58%	49%	54%		53%	45%	52%	53%	46%	

Traits Observed: BWT

Joining Details: PTIC to Irelands Geeman G57. To calve prior to sale.



Lot 51 IRELANDS ELLA G76



DOB: 02/07/2011

AMFU NHFU CAFU DDF

B/R NEW DESIGN 036
BOOROOMOOKA THEO T030 (AI)
BOOROOMOOKA QUAIN T Q34

SIRE: NOLZ177 KUNUMA Z177

VICTOREE NOBU (AI)
KUNUMA T62
KUNUMA QUAIN TLY N57 (AI)

29194 OF TE MANIA
ATLAS 941 OF TURIROA (ET)
582 OF TURIROA

DAM: VICB15 IRELANDS LASS B15 (AI)

KOA CRUZ U32 (AI)
IRELANDS LASS Y28
KYLOH LASS Q35

Notes: A complete young cow with a perfect udder. Her sire is just such a consistent breeder. His type is just great with softness, great temperament and so sound. It may not be the trendy genetics but they will not let you down. A great young cow.

Purchaser:..... \$:



September 2013 Angus Australia BREEDPLAN

	CE Dir	CE Dtrs	Gest Lgth	Birth Wt.	200 Wt.	400 Wt.	600 Wt.	MC Wt.	Milk	Scrotal	D to Calv	Carc Wt.	EMA	Rib Fat	Rump Fat	RBY%	IMF%
EBV	-0.2	-0.6	--	+5.6	+37	+66	+85	+75	+14	+1.7	--	+44	+3.7	+0.2	-0.1	+0.8	--
ACC	42%	37%		72%	67%	64%	63%	57%	51%	50%		55%	45%	53%	53%	46%	

Traits Observed: BWT,200WT

Joining Details: Bull calf at foot J335 born 16/8/13 by Irelands Gapsted G25.



Above: Irelands Ella E20 (Sold \$4000 to Nampara Pastoral Co.) Sydney Royal Show 2011.



Above: lot 52 Irelands Maori Maid E92



Lot 52 IRELANDS MAORI MAID E92



DOB: 05/11/2009

AMFU NHFU CAFU DDF

BOOROOMOOKA UNDERTAKEN U170 (AI)
BOOROOMOOKA UNDERTAKEN Y145
BOOROOMOOKA UAAISE U101 (AI)

SIRE: NORC278 RENNYLEA C278 (AI) (ET)

TE MANIA MODEST M126
BOORHAMAN Y55 (AI)
BOORHAMAN W1 (AI)

B/R NEW DESIGN 036
MERRIC RIVERS NEW DESIGN T149 (AI)
MERRIC RIVERS Q4 (AI) (ET)

DAM: VVWA6 VICTOREE MAORI MAID A6

BOOROOMOOKA TIM T204 (AI)
VICTOREE MAORI MAID W31
VICTOREE MAORI MAID Q53

Notes: I love this cow. What an opportunity to purchase such a great cow. Again Harry Williams told me keep this line in your hers and you will be OK. This cow is deep bodied and easy doing yet sound and can breed. Her first son sold for \$8000 and we have retained the daughter. A real donor prospect here.

Purchaser:..... \$:



September 2013 Angus Australia BREEDPLAN

	CE Dir	CE Dtrs	Gest Lgth	Birth Wt.	200 Wt.	400 Wt.	600 Wt.	MC Wt.	Milk	Scrotal	D to Calv	Carc Wt.	EMA	Rib Fat	Rump Fat	RBY%	IMF%
EBV	+2.7	-0.6	-4.8	+2.3	+34	+70	+84	+66	+13	+2.7	-5.3	+47	+3.8	+1.5	+1.9	-0.8	+2.9
ACC	46%	40%	50%	78%	67%	70%	66%	58%	46%	52%	40%	59%	50%	62%	63%	54%	51%

Traits Observed: BWT,400WT,FAT,EMA,IMF

Joining Details: Bull calf at foot J362 born 11/9/13 by Raff Synergy E96.



Lot 53 IRELANDS TWINKLE G107



DOB: 18/08/2011

AMFU NHFU CAFU DDF

BANQUET XPLANATION X060 (AI) (ET)

BANQUET BUNDY B002 (AI) (ET)

BLACK GOLD CHAMPAGNE J031+89 (AI) (ET)

SIRE: VOND597 BANQUET DATELINE D597 (AI) (ET)

VERMILION DATELINE 7078

BANQUET DREAM Y105 (AI) (ET)

BANQUET KIWI DREAM (AI)

V D A R LUCYS BOY

WEEMALAH LUCY'S BOY W22 (AI)

WEEMALAH ENID R95

DAM: VSCZ172 WEEMALAH TWINKLE Z172

LANDFALL S/S SCOTCH CAP N203

WEEMALAH TWINKLE V151

BARWIDGEE TWINKLE L430

Purchaser:..... \$:

	September 2013 Angus Australia BREEDPLAN																
	CE Dir	CE Dtrs	Gest Lgth	Birth Wt.	200 Wt.	400 Wt.	600 Wt.	MC Wt.	Milk	Scrotal	D to Calv	Carc Wt.	EMA	Rib Fat	Rump Fat	RBY%	IMF%
EBV	+1.0	--	--	+4.2	+28	+56	+74	--	+7	--	--2.8	+39	+1.8	-0.5	-0.6	+0.2	+0.7
ACC	37%			76%	62%	60%	59%		45%								

Traits Observed: BWT

Joining Details: Heifer calf at foot J373 born 21/9/13 by Irelands Geeman G57.



Above: Lot 54 Irelands Vicky G139



Lot 54 IRELANDS VICKY G139



DOB: 06/09/2011

AMFU NHFU CAFU DDFU

TE MANIA UNLIMITED U3271 (AI) (ET)
TE MANIA INFINITY 04 379 AB
TE MANIA 95102

SIRE: VICE28 IRELANDS EXCELLENCE E28 (AI) (ET)

YOUNKIN TRIUMPH 4966
IRELANDS ECLYPTA Y7 (AI) (ET)
KYLOH M032 ECLYPTA P27 (AI) (ET)

KOOJAN HILLS SOMETHIN SPECIAL (AI)
ALPINE ACCOUNT A50 (AI)
LITTLE MEADOWS EDWINA X3 (AI)

DAM: VICD7 IRELANDS VICKY D7 (AI) (ET)

VERMILION YELLOWSTONE
IRELANDS VICKY Z15 (AI) (ET)
FERNLEIGH VICKY S103 (AI) (ET)

Notes: A reliable impressive young cow with a big future. Her pedigree combines two of our strongest highest performing cow families. This young cow is so long, soft and super sound. Study the pedigree and consider the consistency.

Purchaser:..... \$:

September 2013 Angus Australia BREEDPLAN																	
	CE Dir	CE Dtrs	Gest Lgth	Birth Wt.	200 Wt.	400 Wt.	600 Wt.	MC Wt.	Milk	Scrotal	D to Calv	Carc Wt.	EMA	Rib Fat	Rump Fat	RBY%	IMF%
EBV	+0.0	--	--	+4.3	+38	+70	+89	+78	+8	--	-4.1	+51	+3.7	+1.4	+1.8	-0.2	+1.3
ACC	38%			75%													

Traits Observed: BWT

Joining Details: Bull calf at foot J372 born 19/9/13 by Irelands Geeman G57.



Lot 55 IRELANDS QUIET G102



DOB: 16/08/2011

AMFU NHFU CAFU DDF

TE MANIA UNLIMITED U3271 (AI) (ET)
TE MANIA INFINITY 04 379 AB
TE MANIA 95102

SIRE: VICE22 IRELANDS ECONOMIC E22 (AI) (ET)

VERMILION YELLOWSTONE
IRELANDS VICKY Z15 (AI) (ET)
FERNLEIGH VICKY S103 (AI) (ET)

BOOROOMOOKA UNDERTAKEN Y145
RENNYLEA C278 (AI) (ET)
BOORHAMAN Y55 (AI)

DAM: VICE107 IRELANDS QUIET E107

CLAMON X150 (AI)
VICTOREE A25
CLAMON X195 (AI) (ET)

Notes: A great wedge shaped female with a near perfect udder. This cow family is so strong and combined with the Vicky family provides so exciting genetics for any herd. The E22 daughters look great and his sons have sold so well. Don't miss her.

Purchaser:..... \$:

September 2013 Angus Australia BREEDPLAN																	
	CE Dir	CE Dtrs	Gest Lgth	Birth Wt.	200 Wt.	400 Wt.	600 Wt.	MC Wt.	Milk	Scrotal	D to Calv	Carc Wt.	EMA	Rib Fat	Rump Fat	RBY%	IMF%
EBV	+0.4	--	--	+3.9	+39	+83	+99	+82	+11	+2.6	-4.4	+59	+5.9	+1.3	+1.1	0.0	+2.5
ACC	38%			75%													

Traits Observed: BWT

Joining Details: Bull calf at foot J334 born 9/8/13 by Irelands Gapsted G25.



Above: lot 56 Irelands Nikki G175



Lot 56 IRELANDS NIKKI G175



DOB: 03/10/2011

AMFU NHFU CAFU DDFU

VERMILION DATELINE 7078

J & C APPEAL A10 (AI)

J & C MISS CHEYENNE W3 (AI) (ET)

SIRE: QRFE96 RAFF SYNERGY E96

BR MIDLAND

RAFF DORIS Z199 (AI) (ET)

RAFF DORIS W10

WAITAPU DIPLOMAT 51

TANGIAU 150

TANGIAU 47

DAM: VICD117 IRELANDS NIKKI D117 (AI) (ET)

ATAHUA WESTPOINT AB

LONESTAR NIKKI U5 (AI)

LONESTAR NIKKI R7 (AI)

Notes: What more do you want is a great Angus female? This young female has the presence and style we just love. She is long deep bodied and easy doing. The E96 Nikki cross is so powerful and exciting. This is a potential donor cow in my mind.

Purchaser:..... \$:



September 2013 Angus Australia BREEDPLAN

	CE Dir	CE Dtrs	Gest Lgth	Birth Wt.	200 Wt.	400 Wt.	600 Wt.	MC Wt.	Milk	Scrotal	D to Calv	Carc Wt.	EMA	Rib Fat	Rump Fat	RBY%	IMF%
EBV	-1.1	--	--	+6.1	+43	+79	+106	--	+8	+2.1	-1.9	+56	+1.9	-1.7	-1.7	+0.8	--
ACC	39%			74%					40%	50%							

Traits Observed: BWT

Joining Details: PTIC to Irelands Geeman G57. To calve prior to sale.



Lot 57 IRELANDS WATTLE G178 (APR)



DOB: 05/10/2011

AMFU NHFU CAF DDF

BANQUET XPLANATION X060 (AI) (ET)

BANQUET BUNDY B002 (AI) (ET)

BLACK GOLD CHAMPAGNE J031+89 (AI) (ET)

SIRE: VOND597 BANQUET DATELINE D597 (AI) (ET)

VERMILION DATELINE 7078

BANQUET DREAM Y105 (AI) (ET)

BANQUET KIWI DREAM (AI)

P A R B DESIGN PLUS 97

QUAMBY X119 (AI)

QUAMBY T226

DAM: DQUB23 QUAMBY B23 (APR)


WATTLETOP V108 (AI) (ET)

QUAMBY X59 (APR)

WATTLETOP L5L (APR) (AI)

Notes: A rock solid breeding female here. The combination of D597 and the Quamby cows has been so strong and reliable and this young cow is no exception. We still have her dam and grand dam in our herd. A impressive young cow.

Purchaser:..... \$:

	September 2013 Angus Australia BREEDPLAN																
	CE Dir	CE Dtrs	Gest Lgth	Birth Wt.	200 Wt.	400 Wt.	600 Wt.	MC Wt.	Milk	Scrotal	D to Calv	Carc Wt.	EMA	Rib Fat	Rump Fat	RBY%	IMF%
EBV	-0.3	--	--	+5.5	+35	+68	+85	--	+10	--	--	--	+3.0	-0.6	-0.8	+0.6	+1.0
ACC	36%			74%													

Traits Observed: BWT

Joining Details: PTIC to Irelands Geeman G57. To calve prior to sale.



Above: U7 Woodgreen Champagne, half sister to Banquet Bundy B002. Purchased for \$10 000 by Irelands Angus



Lot 58 IRELANDS VICKY G172



DOB: 03/10/2011

AMFU NHFU CAFU DDFU

CIRCLE A ADVENTURE 0124

ONEILLS EXPEDITION

ONEILLS DELIA 715

SIRE: QRFE264 RAFF EXPEDITION E264 (AI) (ET)

S V F BANDOLIER

HOFF BLACKBIRD 594 5217 (ET)

HOFF BOSS LADY S C 3V9

TE MANIA UNLIMITED U3271 (AI) (ET)

TE MANIA INFINITY 04 379 AB

TE MANIA 95102

DAM: VICE19 IRELANDS VICKY E19 (AI) (ET)

VERMILION YELLOWSTONE

IRELANDS VICKY Z15 (AI) (ET)

FERNLEIGH VICKY S103 (AI) (ET)

Notes: A emerging star. E264 has worked so well for us and I am so excited about continuing to use him. Raff Angus sold a bull for \$32,000 in their 2013 sale out of E264 flush sister so we know the genetics are working. E19 is an amazing cow who is lot 8. Donor potential.

Purchaser:..... **\$:**

	September 2013 Angus Australia BREEDPLAN																
	CE Dir	CE Dtrs	Gest Lgth	Birth Wt.	200 Wt.	400 Wt.	600 Wt.	MC Wt.	Milk	Scrotal	D to Calv	Carc Wt.	EMA	Rib Fat	Rump Fat	RBY%	IMF%
EBV	+1.1	--	-4.0	+4.0	+43	+86	+109	+102	+14	+1.5	--	+67	+5.6	-0.8	-0.9	+0.8	+1.5
ACC	40%			74%	60%	59%	57%		40%								

Traits Observed: BWT

Joining Details: Heifer calf at foot J371 born 19/9/13 by Irelands Geeman G57.



Above: Irelands Vicky E26, full genetic sister to Lot 58 dam Vicky E19 (Sold \$16,000 to Four-0-Eight Angus) Sydney Royal Show 2012



Lot 59 IRELANDS ELMUNGIE G181



DOB: 09/10/2011

AMFU NHFU CAFU DDF

VERMILION DATELINE 7078

J & C APPEAL A10 (AI)

J & C MISS CHEYENNE W3 (AI) (ET)

SIRE: QRFE96 RAFF SYNERGY E96

BR MIDLAND

RAFF DORIS Z199 (AI) (ET)

RAFF DORIS W10

G A R YIELD GRADE

LAWSONS YIELD GRADE Z1338 (AI)

LAWSONS PAYLOAD X421 (AI) (ET)

DAM: DQUD3 QUAMBY D3

VICTOREE FRANKO. (ET)

QUAMBY ELMUNGIE L54

QUAMBY ELMUNGIE D17.

Notes: Don't miss this young female. The combination of Synergy E96 and our Quamby cows is amazing. This heifers 3/4 sister was our top priced heifer in Sydney this year and just look at her photo. I just love this combination so take another look.

Purchaser:..... \$:



September 2013 Angus Australia BREEDPLAN

	CE Dir	CE Dtrs	Gest Lgth	Birth Wt.	200 Wt.	400 Wt.	600 Wt.	MC Wt.	Milk	Scrotal	D to Calv	Carc Wt.	EMA	Rib Fat	Rump Fat	RBY%	IMF%
EBV	-0.1	--	--	+5.2	+41	+78	+104	--	+9	--	--	--	+3.8	-1.1	-1.0	+0.8	+0.7
ACC	35%			74%													

Traits Observed: BWT

Joining Details: PTIC to Irelands Geeman G57. To calve prior to sale.



Above: Irelands Elma G155, ¾ sister to Lot 59 (Sold \$12 000 to Santa Co Rural) Sydney Royal Show 2013



Lot 60 IRELANDS SPES G108



DOB: 19/08/2011

AMFU NHFU CAFU DDF

BANQUET XPLANATION X060 (AI) (ET)

BANQUET BUNDY B002 (AI) (ET)

BLACK GOLD CHAMPAGNE J031+89 (AI) (ET)

SIRE: VOND597 BANQUET DATELINE D597 (AI) (ET)

VERMILION DATELINE 7078

BANQUET DREAM Y105 (AI) (ET)

BANQUET KIWI DREAM (AI)

TE MANIA SHEEN S155 (AI) (ET)

WEEMALAH SHEEN V31 (AI)

WEEMALAH ISOBYX R117

DAM: VSCZ139 WEEMALAH SPES Z139

MERRIC RIVERS NEW DESIGN T149 (AI)

WEEMALAH SPES X24 (AI)

WEEMALAH SPES M54

Notes: A impressive D597 daughter to finish the sale. Her dam is from one of the oldest cow families in the country which many would not of heard of but they are rock solid breeders with real consistency. A great young female.

Purchaser:..... \$:



September 2013 Angus Australia BREEDPLAN

	CE Dir	CE Dtrs	Gest Lgth	Birth Wt.	200 Wt.	400 Wt.	600 Wt.	MC Wt.	Milk	Scrotal	D to Calv	Carc Wt.	EMA	Rib Fat	Rump Fat	RBY%	IMF%
EBV	+1.4	--	-2.4	+3.9	+32	+66	+80	+80	+13	+2.5	-3.0	+44	+2.1	+0.1	-0.2	0.0	+1.1
ACC	38%			76%	62%	60%	58%		43%								

Traits Observed: BWT

Joining Details: PTIC to Irelands Geeman G57. To calve prior to sale.

JOINING SIRES



ATAHUA FREEDOM
609-10

10/08/2010
BRAVEHEART OF STERN
ATAHUA ALICE 285-05

SEPTEMBER 2013 Angus Australia BREEDPLAN

	Calv. Ease Dir	Cal Ease Dtrs (%)	Gest Len. (days)	Birth Wt. (kg)	200 Day Wt. (kg)	400 Day Wt. (kg)	600 Day Wt. (kg)	Mat. Cow Wt. (kg)	Milk (kg)	Scrotal Size (cm)	Days to Cal (days)	Car-case Wt. (kg)	EMA (sq.cm)	Rib Fat (mm)	Rump Fat (mm)	Retail Beef Yield (%)	IMF (%)
EBV	-0.4	0.0	-4.1	+6.1	+37	+72	+90	+84	+11	+2.0	-	+47	+4.5	+0.1	+0.4	+0.7	+0.9
Acc	46%	37%	68%	79%	74%	73%	74%	66%	55%	75%	-	64%	54%	62%	63%	54%	49%



IRELANDS GALAXY
G43(AI)

08/04/2011
IRELANDS DELTROI D2
IRELANDS PLEASURE C4(AI)

SEPTEMBER 2013 Angus Australia BREEDPLAN

	Calv. Ease Dir	Cal Ease Dtrs (%)	Gest Len. (days)	Birth Wt. (kg)	200 Day Wt. (kg)	400 Day Wt. (kg)	600 Day Wt. (kg)	Mat. Cow Wt. (kg)	Milk (kg)	Scrotal Size (cm)	Days to Cal (days)	Car-case Wt. (kg)	EMA (sq.cm)	Rib Fat (mm)	Rump Fat (mm)	Retail Beef Yield (%)	IMF (%)	Doc (Tri-al)
EBV	-0.6	-	-3.3	+5.7	+51	+89	+111	-	-	+1.4	-	+66	+5.5	+0.3	+0.1	+0.6	+1.1	-
Acc	35%	-	46%	74%	65%	65%	60%	-	-	70%	-	54%	47%	52%	54%	46%	41%	-



RAFF DYNAMITE D345(AI)(ET)

10/10/2008
PAPA EQUATOR 2928
HOFF BLACKBIRD 594 5217(ET)

SEPTEMBER 2013 Angus Australia BREEDPLAN

	Calv. Ease Dir	Cal Ease Dtrs (%)	Gest Len. (days)	Birth Wt. (kg)	200 Day Wt. (kg)	400 Day Wt. (kg)	600 Day Wt. (kg)	Mat. Cow Wt. (kg)	Milk (kg)	Scrotal Size (cm)	Days to Cal (days)	Car- case Wt. (kg)	EMA (sq.cm)	Rib Fat (mm)	Rump Fat (mm)	Retail Beef Yield (%)	IMF (%)	Doc (Tri- al)
EBV	+0.7	+1.3	-4.6	+4.6	+57	+106	+128	+117	+17	+2.6	-3.7	+86	+6.7	-0.9	-0.8	+1.2	+1.1	-
Acc	66%	57%	65%	93%	88%	89%	88%	78%	67%	90%	49%	81%	74%	80%	79%	71%	67%	-



GRANITE RIDGE THOMAS F223(AI)

20/03/2010
THOMAS GRADE UP 6849
THE GRANGE IMRAN ROSEBUD
D81(AI)(ET)

SEPTEMBER 2013 Angus Australia BREEDPLAN

	Calv. Ease Dir	Cal Ease Dtrs (%)	Gest Len. (days)	Birth Wt. (kg)	200 Day Wt. (kg)	400 Day Wt. (kg)	600 Day Wt. (kg)	Mat. Cow Wt. (kg)	Milk (kg)	Scrotal Size (cm)	Days to Cal (days)	Car- case Wt. (kg)	EMA (sq.cm)	Rib Fat (mm)	Rump Fat (mm)	Retail Beef Yield (%)	IMF (%)	Doc (Tri- al)
EBV	+1.0	+0.8	-4.2	+3.7	+50	+91	+118	+93	+17	+2.8	-5.5	+71	+5.9	+1.2	+2.0	-0.8	+2.8	-
Acc	52%	46%	70%	80%	74%	74%	74%	67%	55%	73%	39%	64%	57%	62%	63%	56%	53%	-

CALF SIREs



IRELANDS GALAXY G43(AI)

08/04/2011

IRELANDS DELTROI D2

IRELANDS PLEASURE C4(AI)

SEPTEMBER 2013 Angus Australia BREEDPLAN																		
	Calv. Ease Dir	Cal Ease Dtrs (%)	Gest Len. (days)	Birth Wt. (kg)	200 Day Wt. (kg)	400 Day Wt. (kg)	600 Day Wt. (kg)	Mat. Cow Wt. (kg)	Milk (kg)	Scrotal Size (cm)	Days to Cal (days)	Car-case Wt. (kg)	EMA (sq.cm)	Rib Fat (mm)	Rump Fat (mm)	Retail Beef Yield (%)	IMF (%)	Doc (Tri-al)
EBV	-0.6	-	-3.3	+5.7	+51	+89	+111	-	-	+1.4	-	+66	+5.5	+0.3	+0.1	+0.6	+1.1	-
Acc	35%	-	46%	74%	65%	65%	60%	-	-	70%	-	54%	47%	52%	54%	46%	41%	-



RAFF SYNERGY E96

31/03/2009

J & C APPEAL A10(AI)

RAFF DORIS Z199(AI)(ET)

SEPTEMBER 2013 Angus Australia BREEDPLAN																		
	Calv. Ease Dir	Cal Ease Dtrs (%)	Gest Len. (days)	Birth Wt. (kg)	200 Day Wt. (kg)	400 Day Wt. (kg)	600 Day Wt. (kg)	Mat. Cow Wt. (kg)	Milk (kg)	Scrotal Size (cm)	Days to Cal (days)	Car-case Wt. (kg)	EMA (sq.cm)	Rib Fat (mm)	Rump Fat (mm)	Retail Beef Yield (%)	IMF (%)	Doc (Tri-al)
EBV	-0.4	+1.6	-4.9	+6.9	+55	+98	+133	+141	+9	+2.4	-2.6	+73	+4.3	-2.5	-2.2	+1.3	+0.5	-
Acc	59%	49%	67%	88%	82%	84%	80%	73%	63%	84%	41%	74%	67%	74%	73%	63%	60%	-



IRELANDS FLETCHER F1

02/03/2010

RENNYLEA C277(AI)(ET)

TE MANIA WARGOONA Z31(AI)

SEPTEMBER 2013 Angus Australia BREEDPLAN																		
	Calv. Ease Dir	Cal Ease Dtrs (%)	Gest Len. (days)	Birth Wt. (kg)	200 Day Wt. (kg)	400 Day Wt. (kg)	600 Day Wt. (kg)	Mat. Cow Wt. (kg)	Milk (kg)	Scrotal Size (cm)	Days to Cal (days)	Car-case Wt. (kg)	EMA (sq.cm)	Rib Fat (mm)	Rump Fat (mm)	Retail Beef Yield (%)	IMF (%)	Doc (Tri-al)
EBV	+2.3	+1.1	-6.4	+4.3	+47	+93	+114	+105	+14	+2.8	-5.4	+62	+4.2	+2.1	+1.9	-1.0	+2.5	-
Acc	53%	42%	78%	92%	73%	71%	70%	63%	47%	51%	39%	55%	52%	54%	53%	51%	47%	-



IRELANDS GAPSTED G25

18/03/2011

KAROO W109 DIRECTION Z181

IRELANDS WARGOONA C52

SEPTEMBER 2013 Angus Australia BREEDPLAN																		
	Calv. Ease Dir	Cal Ease Dtrs (%)	Gest Len. (days)	Birth Wt. (kg)	200 Day Wt. (kg)	400 Day Wt. (kg)	600 Day Wt. (kg)	Mat. Cow Wt. (kg)	Milk (kg)	Scrotal Size (cm)	Days to Cal (days)	Car-case Wt. (kg)	EMA (sq.cm)	Rib Fat (mm)	Rump Fat (mm)	Retail Beef Yield (%)	IMF (%)	Doc (Tri-al)
EBV	+1.9	+1.9	-5.0	+4.5	+45	+83	+107	+92	+15	+2.4	-5.3	+62	+7.3	+2.5	+3.1	-0.6	+2.0	-
Acc	56%	50%	58%	78%	72%	70%	67%	63%	61%	76%	42%	64%	62%	66%	64%	56%	54%	-



RENNYLEA BLACK GOLD F340(AI)(ET)

02/09/2010

TE MANIA INFINITY 04 379 AB

LAWSON'S NEW DESIGN 1407 Z1393(AI)

SEPTEMBER 2013 Angus Australia BREEDPLAN																		
	Calv. Ease Dir	Cal Ease Dtrs (%)	Gest Len. (days)	Birth Wt. (kg)	200 Day Wt. (kg)	400 Day Wt. (kg)	600 Day Wt. (kg)	Mat. Cow Wt. (kg)	Milk (kg)	Scrotal Size (cm)	Days to Cal (days)	Car-case Wt. (kg)	EMA (sq.cm)	Rib Fat (mm)	Rump Fat (mm)	Retail Beef Yield (%)	IMF (%)	Doc (Tri-al)
EBV	+0.6	-0.4	-4.1	+1.7	+36	+80	+98	+74	+11	+1.6	-4.6	+63	+8.0	+1.0	+1.3	+0.1	+3.2	-4
Acc	64%	58%	73%	84%	77%	77%	75%	70%	63%	78%	52%	69%	64%	68%	69%	64%	62%	65%



IRELAND'S GEEMAN G57(AI)

29/04/2011

RENNYLEA EDMUND E11(AI)(ET)

VICTOREE ROSE D81

SEPTEMBER 2013 Angus Australia BREEDPLAN																		
	Calv. Ease Dir	Cal Ease Dtrs (%)	Gest Len. (days)	Birth Wt. (kg)	200 Day Wt. (kg)	400 Day Wt. (kg)	600 Day Wt. (kg)	Mat. Cow Wt. (kg)	Milk (kg)	Scrotal Size (cm)	Days to Cal (days)	Car-case Wt. (kg)	EMA (sq.cm)	Rib Fat (mm)	Rump Fat (mm)	Retail Beef Yield (%)	IMF (%)	Doc (Tri-al)
EBV	+1.5	+0.7	-4.5	+3.7	+40	+80	+96	-	+10	+2.9	-5.9	+55	+4.5	+2.6	+3.0	-1.5	+3.5	-
Acc	44%	37%	55%	67%	69%	69%	63%	-	42%	74%	35%	59%	52%	56%	58%	51%	47%	-



MATAURI OUTLIER F031

28/08/2010

MATAURI REALITY 839

MATAURI 08860



SEPTEMBER 2013 Angus Australia BREEDPLAN																		
	Calv. Ease Dir	Cal Ease Dtrs (%)	Gest Len. (days)	Birth Wt. (kg)	200 Day Wt. (kg)	400 Day Wt. (kg)	600 Day Wt. (kg)	Mat. Cow Wt. (kg)	Milk (kg)	Scrotal Size (cm)	Days to Cal (days)	Car-case Wt. (kg)	EMA (sq.cm)	Rib Fat (mm)	Rump Fat (mm)	Retail Beef Yield (%)	IMF (%)	Doc (Tri-al)
EBV	+0.6	+0.5	-5.5	+6.0	+52	+93	+115	+100	+14	+4.2	-	+59	+4.0	+0.5	+0.9	+0.2	+1.3	
Acc	46%	38%	53%	78%	72%	72%	66%	58%	52%	76%	-	62%	57%	63%	61%	50%	46%	

WHATEVER YOUR MARKET WE'VE GOT YOU COVERED...



TOP PRICED BULLS AUSTRALIAN AUCTION RECORD

Irelands Galaxy G43, sold to Adameluca Angus for an Australian Auction Record of \$117,500.



PTIC COMMERCIAL FEMALE RECORD

20 Autumn PTIC commercial cows sold at our 2011 commercial female sale for an Australian Record of \$3050. All pure Irelands blood.



TOP QUALITY BEEF

Long time clients nick and Pops Cobcroft "Highbank" Pastoral Co, Young, were awarded the highest marbling and yield Awards at the CAAB Presentation night. Their entire consignment of 171 all graded at the top level.

10 of our

Rising Stars

...Consistency is no mistake.



LOTS 20 - 30

SIRES INCLUDE: IRELANDS FLETCHER F1 - RENNYLEA EDMUND E11 - IRELANDS ERWIN E24 - LAWSONS DINKY DI - RAFF EXPLOSIVE E108 - RAFF DYNAMITE D345 - HINGAIA 469